

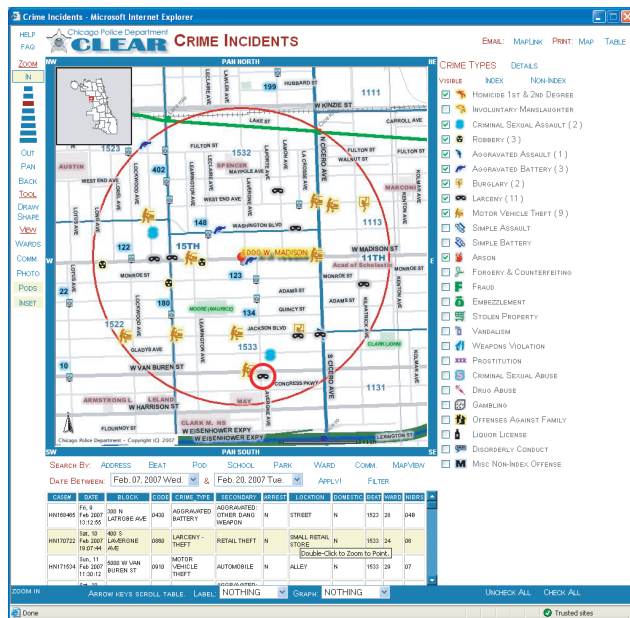
CLEARMAP

THE CHICAGO POLICE DEPARTMENT DEVELOPED THIS WEB APPLICATION TO PROVIDE RESIDENTS OF THE CITY OF CHICAGO WITH A TOOL TO ASSIST THEM IN PROBLEM-SOLVING AND COMBATING CRIME AND DISORDER IN THEIR NEIGHBORHOODS. IT IS BASED UPON THE CLEAR (CITIZEN LAW ENFORCEMENT ANALYSIS AND REPORTING) SYSTEM DEVELOPED BY THE DEPARTMENT FOR USE BY ITS POLICE OFFICERS.

THIS WEB APPLICATION ENABLES YOU TO SEARCH THE CHICAGO POLICE DEPARTMENT'S DATABASE OF REPORTED CRIME. YOU WILL BE ABLE TO SEE MAPS, GRAPHS, AND TABLES OF REPORTED CRIME. THE DATABASE CONTAINS 90 DAYS OF INFORMATION WHICH YOU CAN ACCESS IN BLOCKS OF UP TO 14 DAYS. DATA IS REFRESHED DAILY. HOWEVER, THE MOST RECENT INFORMATION IS BACK-DATED 7 DAYS FROM TODAY'S DATE.



CLEARMAP



SEARCH BY ADDRESS



Chicago Police Department

Bureau of Administrative Services
GIS Group

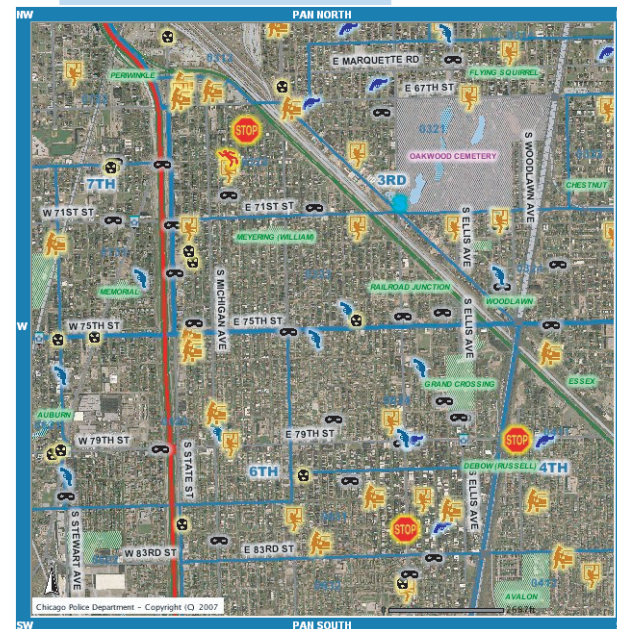
3510 S Michigan Ave
Chicago, IL 60653

<http://gis.chicagopolice.org>
gisteam@chicagopolice.org



CLEARMAP

gis.chicagopolice.org



Address Beat District Pod Park
Community Area School Ward

Mapping Chicago Crime Incidents for Query by Citizens

Mayor of Chicago
Superintendent of Police

3 EASY STEPS

STEP 1: SELECT A DATE RANGE.

DATE BETWEEN &

Use the drop downs to select a time period of interest. You are limited to a two week range because of the volume of data.

STEP 2: CLICK ON A SEARCH BY METHOD.

SEARCH BY: ADDRESS BEAT SCHOOL PARK WARD COMMUNITY

Search for crime incidents using several different methods. If you don't know a police beat, ward or community area you can use an address and the application will determine the correct selection.

STEP 3: SELECT PARAMETERS. CLICK **GO!**

ADDRESS: 5000 W MADISON ST **GO!** SEARCH DISTANCE 1/8 MILE

BEAT / DISTRICT: 0234 **GO!**

SCHOOL: AGASSIZ **GO!** SEARCH DISTANCE 1/8 MILE

PARK: WILSON (FRANK) **GO!** SEARCH DISTANCE 1/8 MILE

WARD: 45 **GO!**

COMMUNITY: PORTAGE PARK **GO!**

The Address, School and Park queries allow searching for incidents that occurred within a distance of up to 1/2 mile.

When searching by Address, please use the street direction (N,E,S,W) and street type (ST, PL, AVE) for the better results.

OPTIONAL: FILTER BY CRIME, HOURS, LOCATIONS

Choose to map only specific crime types, view crime for only a certain range of hours during the day or display only crime that occurred at specific locations like schools and parks.

CLEARMAP COOL FEATURES

DISPLAY CRIME TYPES

The crime incidents are grouped together by easy to understand icons.

- ☒  **HOMICIDE**
- ☒  **ROBBERY**
- ☒  **DRUG ABUSE**

LABEL POINTS

Label by any crime column.

 **PARK**

 **1000 W ADDISON ST**

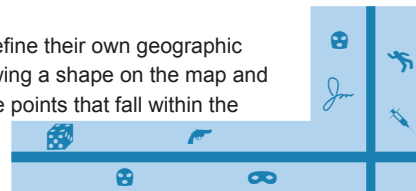
INTERACTIVE GRAPH

Create a simple bar graph that can be helpful for summarizing crime. The graph is dynamic and will change automatically as the data changes. Mouse over a graph value and the corresponding points will be highlighted on the map.



DRAW SHAPE

Allows users to define their own geographic restriction by drawing a shape on the map and viewing only those points that fall within the boundaries.



MAPLINK

Creates an encoded URL link that can be emailed. The URL stores the current map parameters. This feature can help facilitate discussion about crime in a particular area of the City.



SEARCH BY POD

An additional Search By option for police camera PODS is available on the mapping interface. Pick a POD and it will locate and display the crime within 330 feet, the viewing range.



CRIME STOPPERS

A STOP sign icon on the map indicates a Crime Stopper alert. Mouseover the icon to view an image of the Wanted poster. Click the image to open a .pdf document for printing.

IMPORTANT INFO

TURN OFF POP-UP BLOCKERS!

This site uses pop-ups. Please, disable all pop-up blockers when using the map. Failure to comply will make the map inoperable.

MINIMUM SCREEN RESOLUTION

Recommend minimum screen resolution is 1024 x 768. Use a higher resolution if possible for better results. A resolution of 800 x 600 will cause the map display to be small and unreadable.

SUPPORTED WEB BROWSERS

Firefox 1.5 & 2.0

Internet Explorer 6.0 & 7.0

Netscape Communicator 8.1

JAVASCRIPT MUST BE ENABLED

USE HIGH-SPEED INTERNET ACCESS

FEEDBACK

WHAT DO YOU THINK?

Please, contact us if you have any questions, comments or suggestions regarding this web application.

GISTEAM@CHICAGOPOLICE.ORG



GEOGRAPHIC INFORMATION SYSTEM