



APPLICANT: AP 100 W. HURON PROPERTY, LLC  
ADDRESS: 110 W. HURON STREET  
INTRO DATE: 10.05.2016  
PLAN COMMISSION DATE: 11.17.2016

**NORR**  
10.27.2016



APPLICANT: AP 100 W. HURON PROPERTY, LLC  
ADDRESS: 110 W. HURON STREET  
INTRO DATE: 10.05.2016  
PLAN COMMISSION DATE: 11.17.2016

NORR  
10.27.2016





APPLICANT: AP 100 W. HURON PROPERTY, LLC  
ADDRESS: 110 W. HURON STREET  
INTRO DATE: 10.05.2016  
PLAN COMMISSION DATE: 11.17.2016

NORR  
10.27.2016



APPLICANT: AP 100 W. HURON PROPERTY, LLC  
ADDRESS: 110 W. HURON STREET  
INTRO DATE: 10.05.2016  
PLAN COMMISSION DATE: 11.17.2016

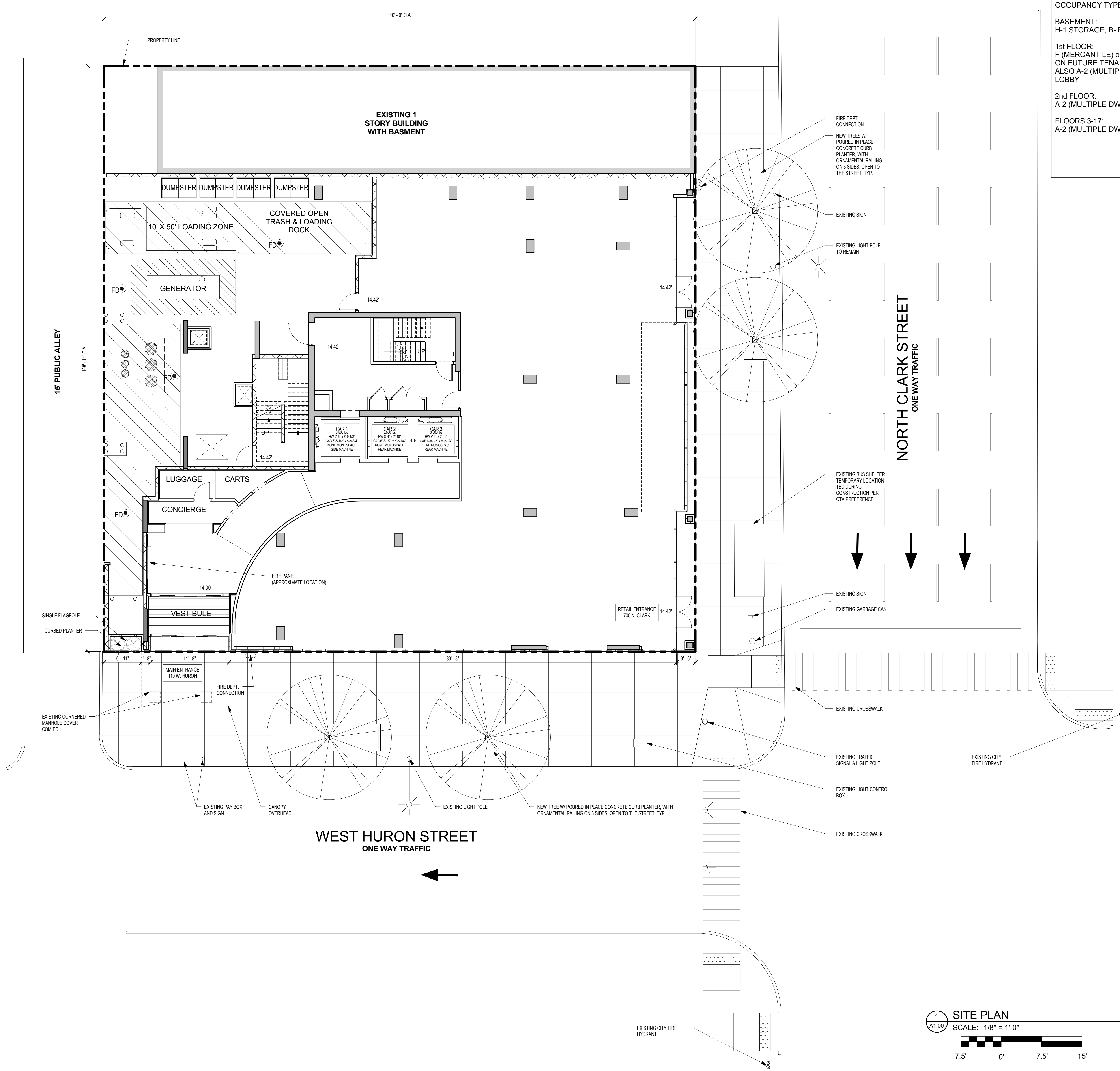
NORR  
10.27.2016





APPLICANT: AP 100 W. HURON PROPERTY, LLC  
ADDRESS: 110 W. HURON STREET  
INTRO DATE: 10.05.2016  
PLAN COMMISSION DATE: 11.17.2016

NORR  
10.27.2016



**SITE PLAN NOTES**

**PROJECT SUMMARY:**

PROPOSED 17 STORY (179'-4" TALL) HOTEL WITH MERCANTILE/SMALL ASSEMBLY ON THE 1ST FLOOR FOR POTENTIAL RESTAURANTS. BUILDING IS TO BE TYPE I-A CONSTRUCTION AND WILL BE FULLY SPRINKLED.

**OCCUPANCY TYPE AT EACH FLOOR:**

**BASEMENT:**  
H-1 STORAGE, B- BUSINESS

**1st FLOOR:**  
F (MERCANTILE) or C-2 (SMALL ASSEMBLY) DEPENDING ON FUTURE TENANT.  
ALSO A-2 (MULTIPLE DWELLINGS) AT HOTEL JUMP LOBBY

**2nd FLOOR:**  
A-2 (MULTIPLE DWELLING) AT MAIN HOTEL LOBBY

**FLOORS 3-17:**  
A-2 (MULTIPLE DWELLING) AT HOTEL ROOMS

**PROJECT**

NORR PROJECT NO.: NICH15.0258.00

**110 W. HURON HOTEL**  
New Construction

110 W. Huron Street,  
Chicago, Illinois 60654

**DEVELOPER**

AP 100 W HURON PROPERTY, LLC

640 North LaSalle Street  
Chicago, IL 60654 t 312.445.9094

**ARCHITECT**

**NORR**  
ARCHITECTS ENGINEERS PLANNERS

325 N LaSalle St. Suite 500  
Chicago, IL 60654  
p 312.424.2400 f 312.424.2424

**STRUCTURAL ENGINEER**

**cea&a**  
STRUCTURAL ENGINEERS

175 North Franklin, Suite 410  
Chicago, IL 60654  
t 312.750.1701

**MEP DESIGN/BUILD**

**Cosentini**  
A TETRA TECH COMPANY

1 South Wacker Drive #37  
Chicago, Illinois 60606  
t 312.670.1800

**LANDSCAPE ARCHITECT**

**WOLFF LANDSCAPE INCORPORATED**

307 North Michigan Avenue  
Chicago, Illinois 60601  
t 312.663.5494 f 312.663.5497

**CIVIL ENGINEER**

**ERIKSSON ENGINEERING ASSOCIATES, LTD.**

601 West Randolph Street  
Chicago, Illinois 60661  
t 312.463.0544

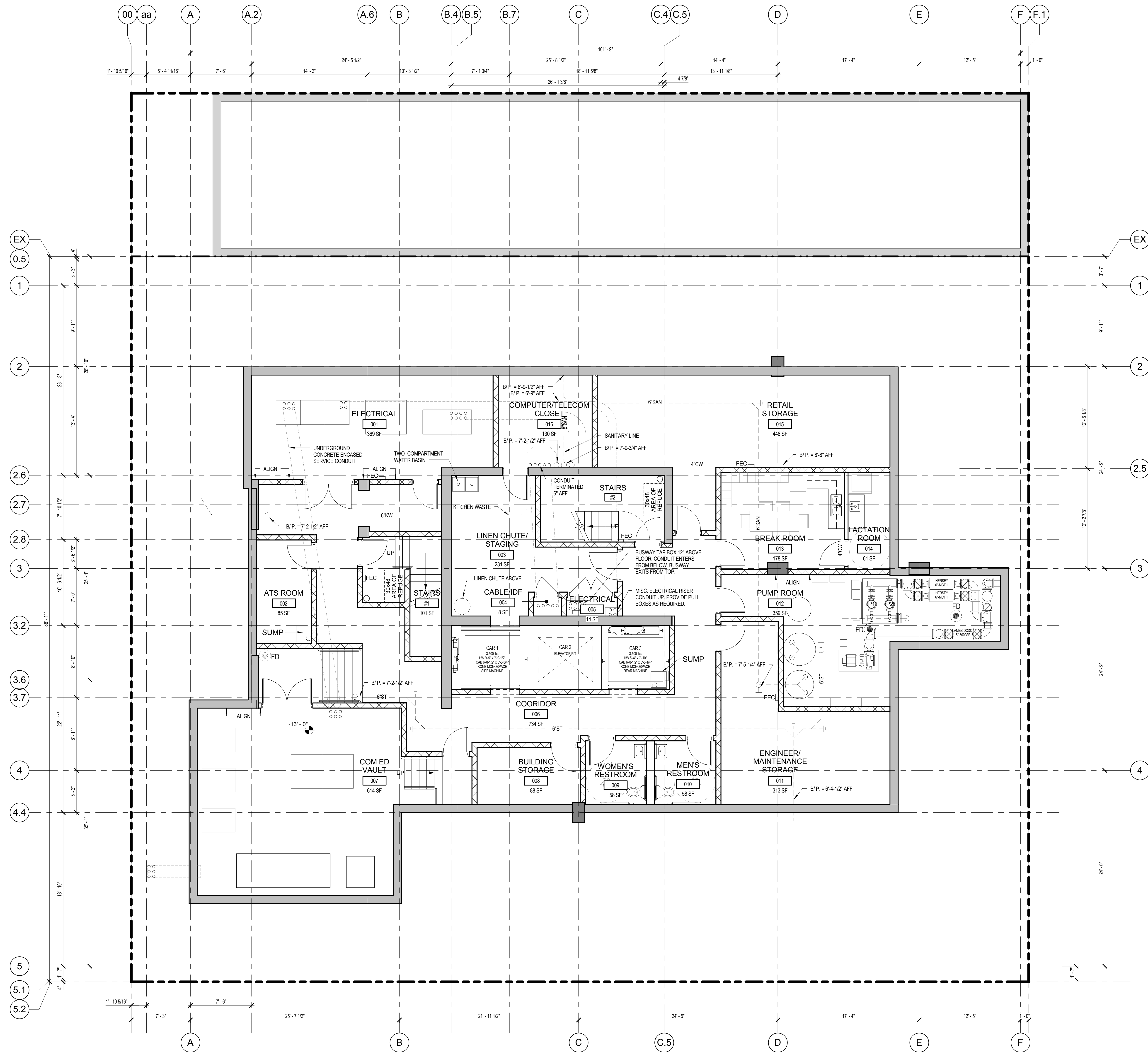
**ISSUES / REVISIONS**

| NO.        | DATE             | ISSUE |
|------------|------------------|-------|
| 09.23.2016 | FOR COORDINATION |       |

**SHEET TITLE**

**1 SITE PLAN**  
SCALE: 1/8" = 1'-0"

0'-0" ELEV = 14.42' C.C.D.



1 FLOOR PLAN - BASEMENT  
 3/16" = 1'-0"  
 5' 0' 5' 10'

0'-0" ELEV = 14.42' C.C.D.

PROJECT

NORR PROJECT NO.: NICH15.0258.00

**110 W. HURON HOTEL**  
 New Construction

110 W. Huron Street,  
 Chicago, Illinois 60654

DEVELOPER

AP 100 W HURON PROPERTY, LLC

640 North LaSalle Street  
 Chicago, IL 60654 t 312.445.9094

ARCHITECT

**NORR**  
 ARCHITECTS ENGINEERS PLANNERS

325 N LaSalle St. Suite 500  
 Chicago, IL 60654  
 p 312.424.2400 f 312.424.2424

STRUCTURAL ENGINEER

**cea&a**  
 STRUCTURAL ENGINEERS

175 North Franklin, Suite 410  
 Chicago, IL 60654  
 t 312.750.1701

MEP DESIGN/BUILD

**Cosentini**  
 A TETRA TECH COMPANY

1 South Wacker Drive #37  
 Chicago, Illinois 60606  
 t 312.670.1800

LANDSCAPE ARCHITECT

WOLFF LANDSCAPE INCORPORATED

307 North Michigan Avenue  
 Chicago, Illinois 60601  
 t 312.663.5494 f 312.663.5497

CIVIL ENGINEER

601 West Randolph Street  
 Chicago, Illinois 60661  
 t 312.463.0544



ISSUES / REVISIONS

| NO. | DATE | ISSUE |
|-----|------|-------|
|     |      |       |
|     |      |       |
|     |      |       |

BASEMENT FLOOR PLAN

PROFESSIONAL STAMP SHEET NUMBER

**A2.00**





1 FLOOR PLAN - 1ST FLOOR  
 3/16" = 1'-0"  
 5' 0' 5' 10'

0'-0" ELEV = 14.42' C.C.D.

PROJECT  
 NORR PROJECT NO.: NICH15.0258.00  
**110 W. HURON HOTEL**  
 New Construction  
 110 W. Huron Street,  
 Chicago, Illinois 60654  
 DEVELOPER  
**AP 100 W HURON PROPERTY, LLC**  
 640 North LaSalle Street  
 Chicago, IL 60654 t 312.445.9094  
 ARCHITECT  
**NORR**  
 ARCHITECTS ENGINEERS PLANNERS  
 325 N LaSalle St. Suite 500  
 Chicago, IL 60654  
 p 312.424.2400 f 312.424.2424  
 STRUCTURAL ENGINEER  
**cea&a**  
 STRUCTURAL ENGINEERS  
 175 North Franklin, Suite 410  
 Chicago, IL 60654  
 t 312.750.1701  
 MEP DESIGN/BUILD  
**Cosentini**  
 A TETRA TECH COMPANY  
 1 South Wacker Drive #37  
 Chicago, Illinois 60606  
 t 312.670.1800  
 LANDSCAPE ARCHITECT  
**WOLFF LANDSCAPE INCORPORATED**  
 307 North Michigan Avenue  
 Chicago, Illinois 60601  
 t 312.663.5494 f 312.663.5497  
 CIVIL ENGINEER  
**ERIKSSON ENGINEERING ASSOCIATES, LTD.**  
 601 West Randolph Street  
 Chicago, Illinois 60661  
 t 312.463.0544

ISSUES / REVISIONS

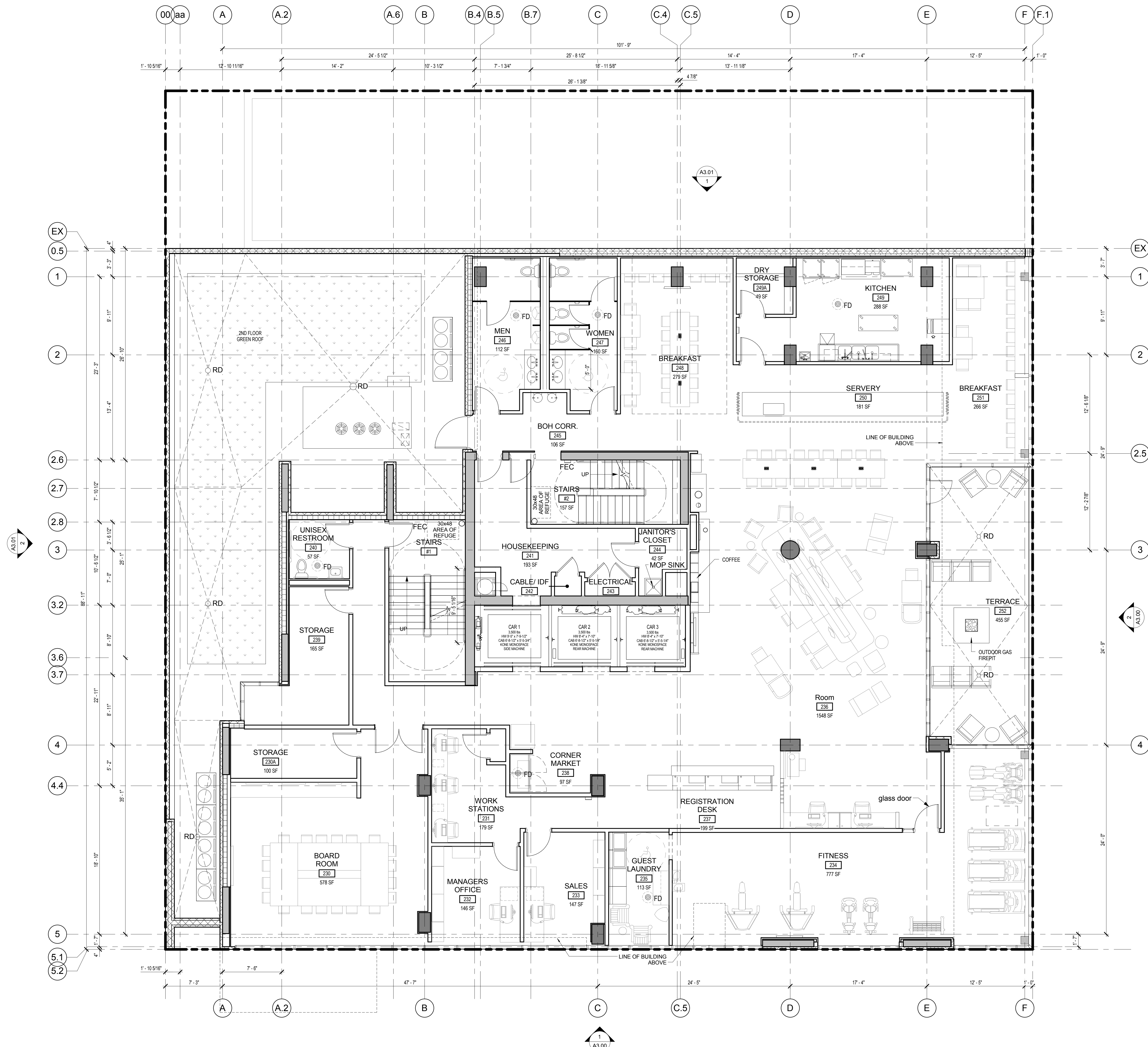
| NO. | DATE | ISSUE |
|-----|------|-------|
|     |      |       |
|     |      |       |
|     |      |       |
|     |      |       |

SHEET TITLE

FIRST FLOOR PLAN  
 PROFESSIONAL STAMP SHEET NUMBER

**A2.01**





1 FLOOR PLAN - FLOOR 2  
 3/16" = 1'-0"  
 5' 0' 5' 10'

0'-0" ELEV = 14.42' C.C.D.

PROJECT

NORR PROJECT NO.: NICH15.0258.00

**110 W. HURON HOTEL**  
 New Construction

110 W. Huron Street,  
 Chicago, Illinois 60654

DEVELOPER

AP 100 W HURON PROPERTY, LLC

640 North LaSalle Street  
 Chicago, IL 60654 t 312.445.9094

ARCHITECT

**NORR**  
 ARCHITECTS ENGINEERS PLANNERS

325 N LaSalle St. Suite 500  
 Chicago, IL 60654  
 p 312.424.2400 f 312.424.2424

STRUCTURAL ENGINEER

**cea&a**  
 STRUCTURAL ENGINEERS

175 North Franklin, Suite 410  
 Chicago, IL 60654  
 t 312.750.1701

MEP DESIGN/BUILD

**Cosentini**  
 A TETRA TECH COMPANY

1 South Wacker Drive #37  
 Chicago, Illinois 60606  
 t 312.670.1800

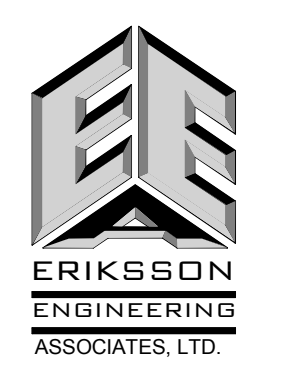
LANDSCAPE ARCHITECT

WOLFF LANDSCAPE INCORPORATED

307 North Michigan Avenue  
 Chicago, Illinois 60601  
 t 312.663.5494 f 312.663.5497

CIVIL ENGINEER

601 West Randolph Street  
 Chicago, Illinois 60661  
 t 312.463.0544



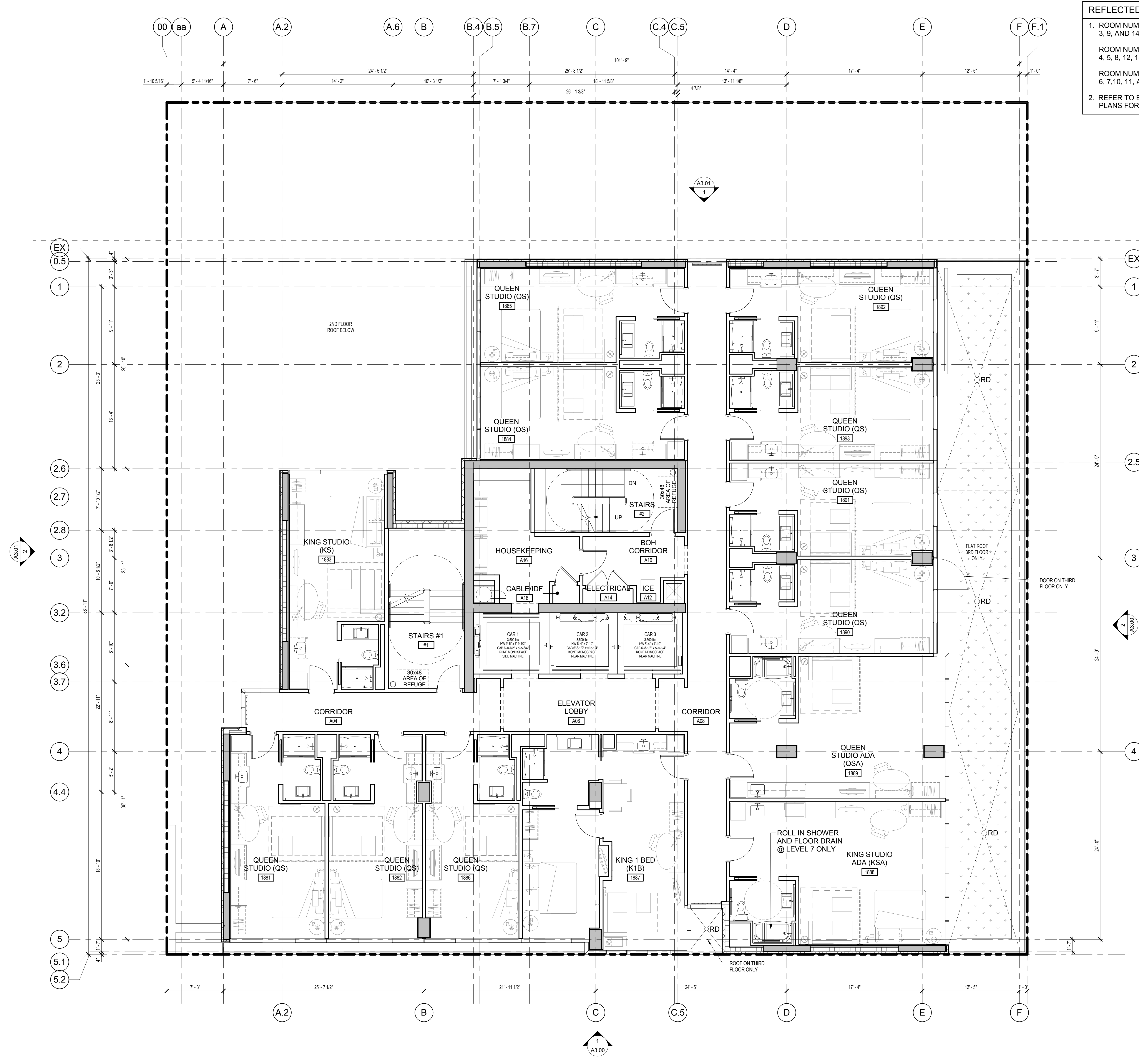
ISSUES / REVISIONS

| NO. | DATE | ISSUE |
|-----|------|-------|
|     |      |       |
|     |      |       |
|     |      |       |

SECOND FLOOR PLAN

PROFESSIONAL STAMP SHEET NUMBER

**A2.02**



**REFLECTED CEILING PLAN NOTES:**

- ROOM NUMBERS PREFIXED WITH A ARE ON FLOORS: 3, 9, AND 14
- ROOM NUMBERS PREFIXED WITH B ARE ON FLOORS: 4, 5, 8, 12, 13, AND 15
- ROOM NUMBERS PREFIXED WITH C ARE ON FLOORS: 6, 7, 10, 11, AND 16

2. REFER TO ENLARGED ROOM REFLECTED CEILING PLANS FOR FURTHER INFORMATION.

**1 FLOOR PLAN A - FLOORS 3, 9 & 14**  
 3/16" = 1'-0"  
 5' 0' 5' 10'

0'-0" ELEV = 14.42' C.C.D.

PROJECT  
 NORR PROJECT NO.: NICH15.0258.00  
**110 W. HURON HOTEL**  
*New Construction*  
 110 W. Huron Street,  
 Chicago, Illinois 60654

DEVELOPER  
**AP 100 W HURON PROPERTY, LLC**  
 640 North LaSalle Street  
 Chicago, IL 60654 t 312.445.9094

ARCHITECT  
**NORR**  
 ARCHITECTS ENGINEERS PLANNERS  
 325 N LaSalle St. Suite 500  
 Chicago, IL 60654  
 p 312.424.2400 f 312.424.2424

STRUCTURAL ENGINEER  
**cea&a**  
 STRUCTURAL ENGINEERS  
 175 North Franklin, Suite 410  
 Chicago, IL 60654  
 t 312.750.1701

MEP DESIGN/BUILD  
**Cosentini**  
 A TETRA TECH COMPANY  
 1 South Wacker Drive #37  
 Chicago, Illinois 60606  
 t 312.670.1800

LANDSCAPE ARCHITECT  
**WOLFF LANDSCAPE INCORPORATED**  
 307 North Michigan Avenue  
 Chicago, Illinois 60601  
 t 312.663.5494 f 312.663.5497

CIVIL ENGINEER  
**ERIKESBON ENGINEERING ASSOCIATES, LTD.**  
 601 West Randolph Street  
 Chicago, Illinois 60661  
 t 312.463.0544

ISSUES / REVISIONS

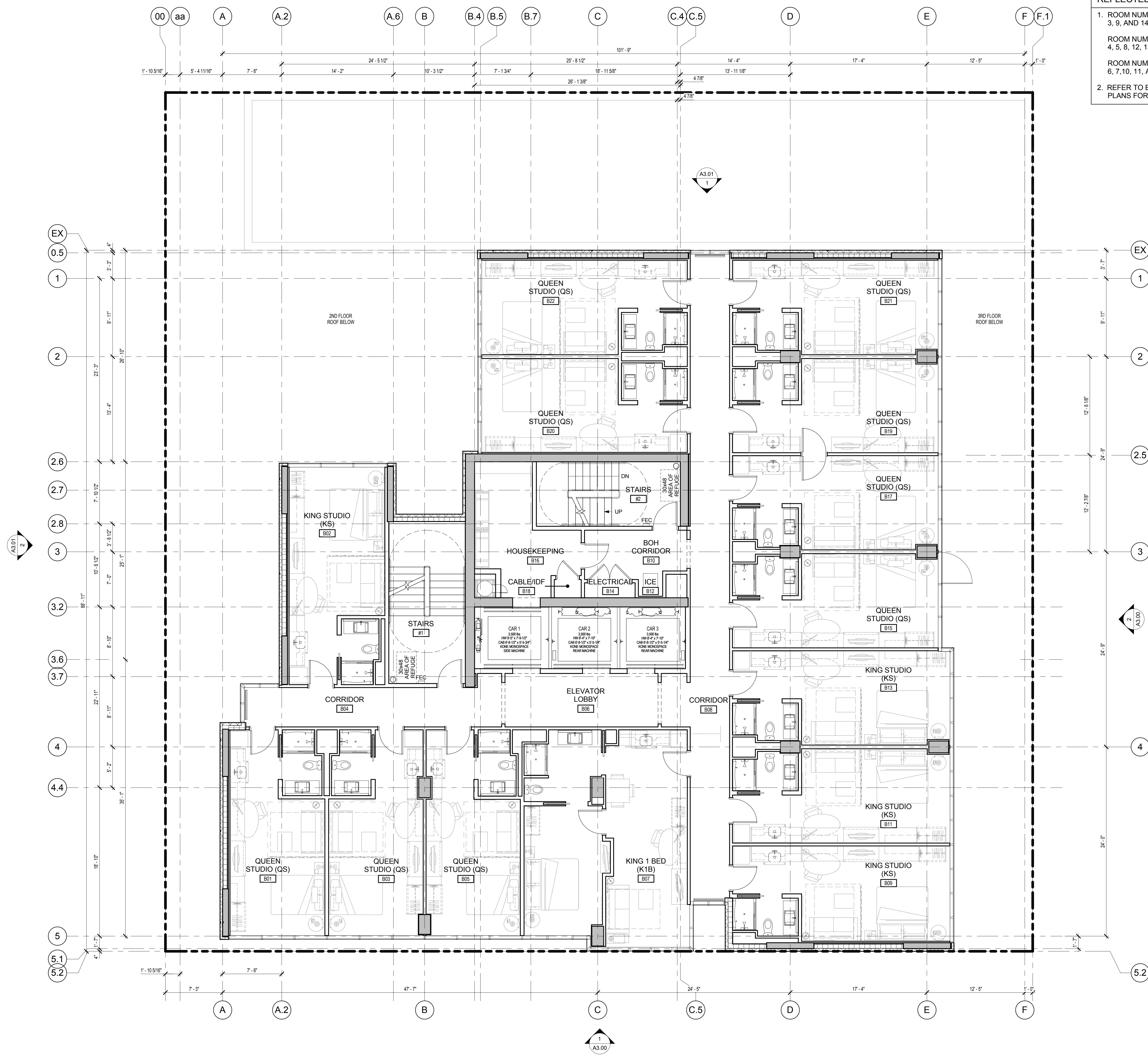
| NO. | DATE | ISSUE |
|-----|------|-------|
|     |      |       |
|     |      |       |
|     |      |       |

SHEET TITLE  
**FLOOR PLAN A - FLOORS 3, 9 & 14**

PROFESSIONAL STAMP SHEET NUMBER

**A2.03**





**REFLECTED CEILING PLAN NOTES:**

- ROOM NUMBERS PREFIXED WITH A ARE ON FLOORS: 3, 9, AND 14
- ROOM NUMBERS PREFIXED WITH B ARE ON FLOORS: 4, 5, 8, 12, 13, AND 15
- ROOM NUMBERS PREFIXED WITH C ARE ON FLOORS: 6, 7, 10, 11, AND 16

2. REFER TO ENLARGED ROOM REFLECTED CEILING PLANS FOR FURTHER INFORMATION.

1 FLOOR PLAN B - FLOORS 4, 5, 8, 12, 13 & 15  
 3/16" = 1'-0"  
 5' 0' 5' 10'

0'-0" ELEV = 14.42' C.C.D.

PROJECT  
 NORR PROJECT NO.: NICH15.0258.00  
**110 W. HURON HOTEL**  
*New Construction*  
 110 W. Huron Street,  
 Chicago, Illinois 60654

DEVELOPER  
**AP 100 W HURON PROPERTY, LLC**  
 640 North LaSalle Street  
 Chicago, IL 60654 t 312.445.9094

ARCHITECT  
**NORR**  
 ARCHITECTS ENGINEERS PLANNERS  
 325 N LaSalle St. Suite 500  
 Chicago, IL 60654  
 p 312.424.2400 f 312.424.2424

STRUCTURAL ENGINEER  
**cea&a**  
 STRUCTURAL ENGINEERS  
 175 North Franklin, Suite 410  
 Chicago, IL 60654  
 t 312.750.1701

MEP DESIGN/BUILD  
**Cosentini**  
 A TETRA TECH COMPANY  
 1 South Wacker Drive #37  
 Chicago, Illinois 60606  
 t 312.670.1800

LANDSCAPE ARCHITECT  
**WOLFF LANDSCAPE INCORPORATED**  
 307 North Michigan Avenue  
 Chicago, Illinois 60601  
 t 312.663.5494 f 312.663.5497

CIVIL ENGINEER  
**ERIKESBON ENGINEERING ASSOCIATES, LTD.**  
 601 West Randolph Street  
 Chicago, Illinois 60661  
 t 312.463.0544

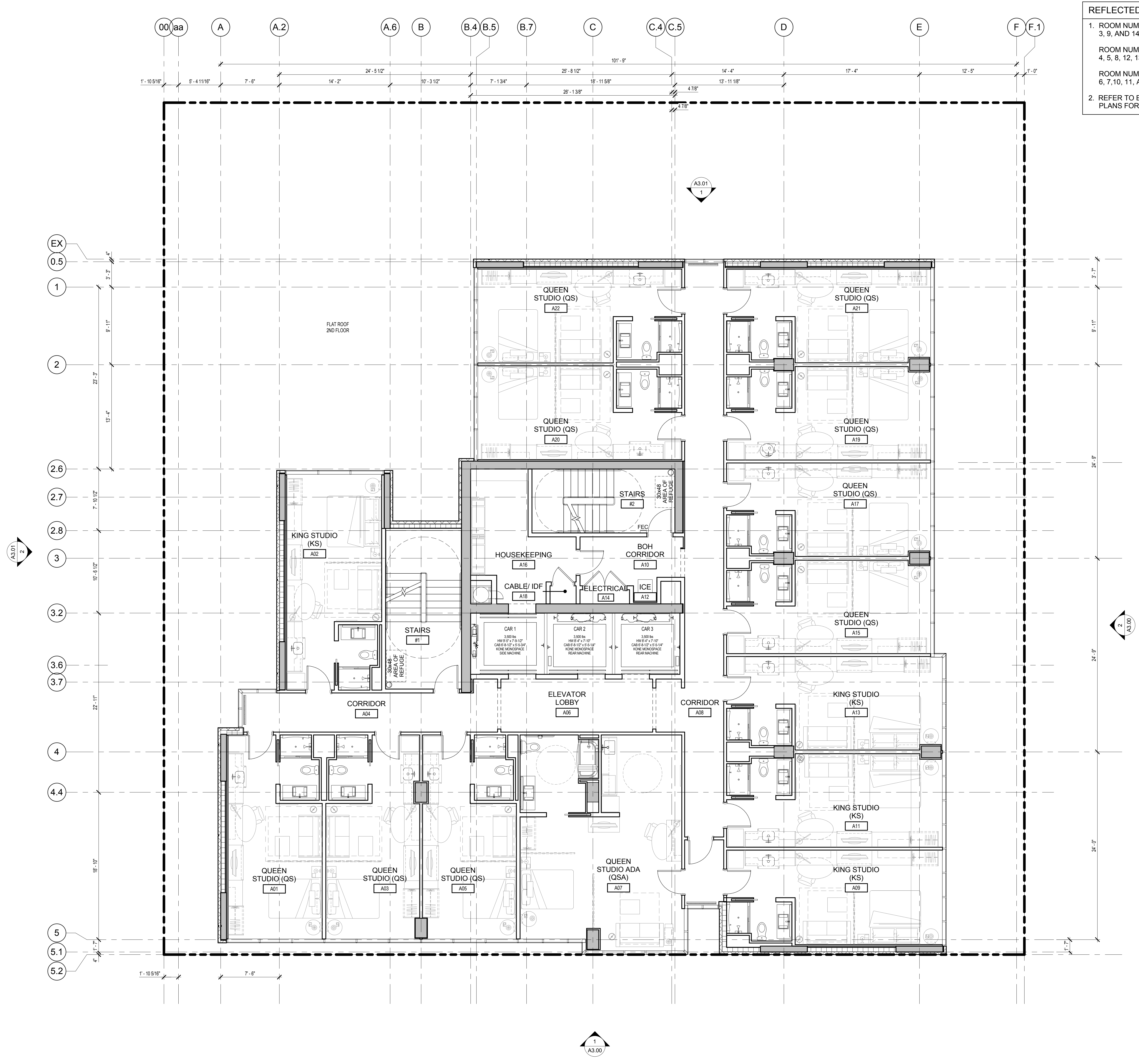
ISSUES / REVISIONS

| NO. | DATE       | ISSUE            |
|-----|------------|------------------|
| 1   | 09.23.2016 | FOR COORDINATION |

SHEET TITLE  
**FLOOR PLAN B - FLOORS 4, 5, 8, 12, 13 & 15**

PROFESSIONAL STAMP SHEET NUMBER

**A2.04**



**REFLECTED CEILING PLAN NOTES:**

- ROOM NUMBERS PREFIXED WITH A ARE ON FLOORS: 3, 9, AND 14
- ROOM NUMBERS PREFIXED WITH B ARE ON FLOORS: 4, 5, 8, 12, 13, AND 15
- ROOM NUMBERS PREFIXED WITH C ARE ON FLOORS: 6, 7, 10, 11, AND 16

2. REFER TO ENLARGED ROOM REFLECTED CEILING PLANS FOR FURTHER INFORMATION.

**1 FLOOR PLAN C - FLOORS 6, 7, 10, 11 & 16**  
 3/16" = 1'-0"  
 5' 0' 5' 10'

0'-0" ELEV = 14.42' C.C.D.

PROJECT  
 NORR PROJECT NO.: NICH15.0258.00  
**110 W. HURON HOTEL**  
*New Construction*  
 110 W. Huron Street,  
 Chicago, Illinois 60654

DEVELOPER  
**AP 100 W HURON PROPERTY, LLC**  
 640 North LaSalle Street  
 Chicago, IL 60654 t 312.445.9094

ARCHITECT  
**NORR**  
 ARCHITECTS ENGINEERS PLANNERS  
 325 N LaSalle St. Suite 500  
 Chicago, IL 60654  
 p 312.424.2400 f 312.424.2424

STRUCTURAL ENGINEER  
**cea&a**  
 STRUCTURAL ENGINEERS  
 175 North Franklin, Suite 410  
 Chicago, IL 60654  
 t 312.750.1701

MEP DESIGN/BUILD  
**Cosentini**  
 A TETRA TECH COMPANY  
 1 South Wacker Drive #37  
 Chicago, Illinois 60606  
 t 312.670.1800

LANDSCAPE ARCHITECT  
**WOLFF LANDSCAPE INCORPORATED**  
 307 North Michigan Avenue  
 Chicago, Illinois 60601  
 t 312.663.5494 f 312.663.5497

CIVIL ENGINEER  
**ERIKESBON ENGINEERING ASSOCIATES, LTD.**  
 601 West Randolph Street  
 Chicago, Illinois 60661  
 t 312.463.0544

ISSUES / REVISIONS

| NO. | DATE       | ISSUE            |
|-----|------------|------------------|
| 1   | 09.23.2016 | FOR COORDINATION |

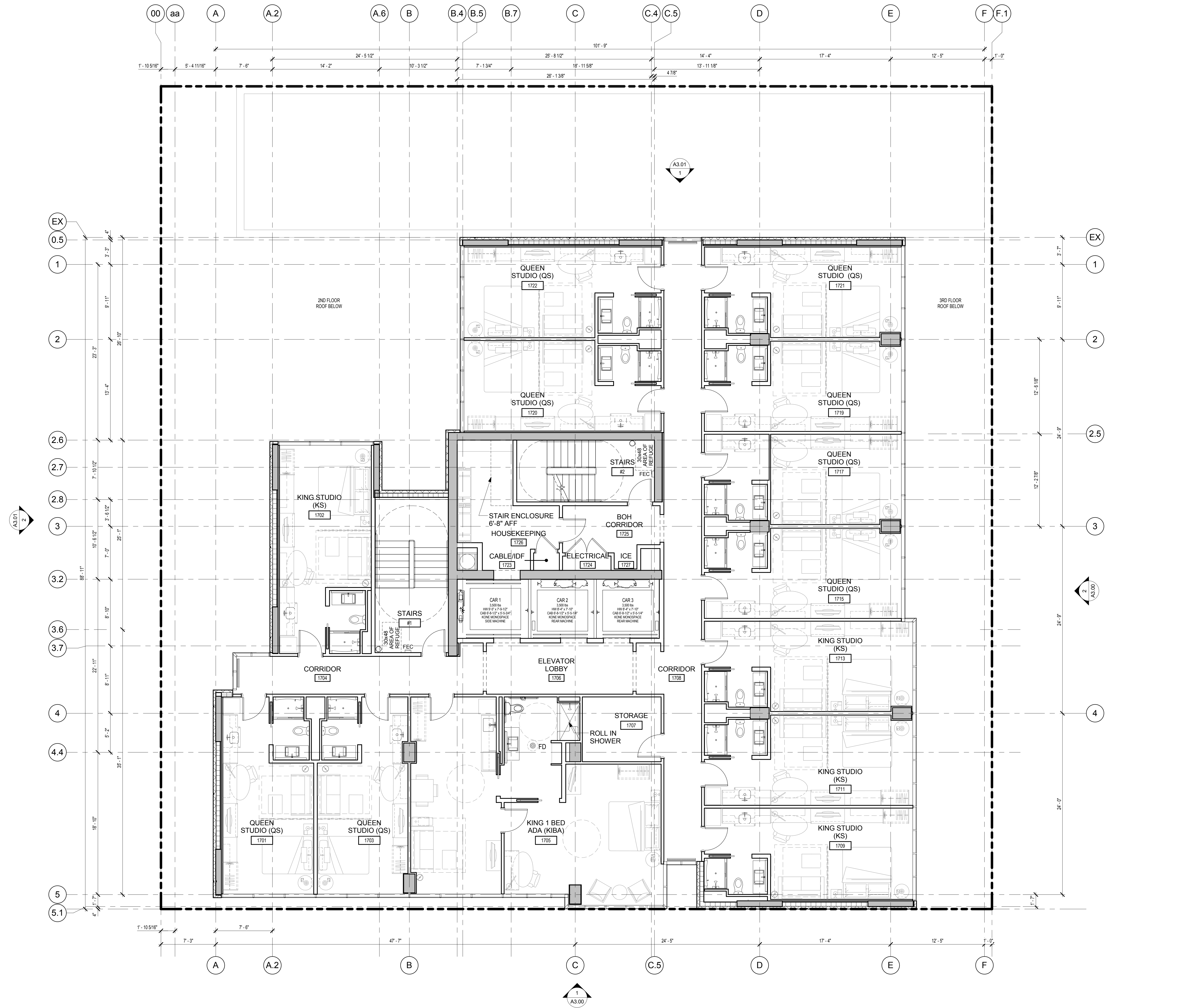
SHEET TITLE

**FLOOR PLAN C - FLOORS 6, 7, 10, 11 & 16**

PROFESSIONAL STAMP SHEET NUMBER

**A2.05**





1 FLOOR PLAN - FLOOR 17  
 3/16" = 1'-0"  
 5' 0' 5' 10'

0'-0" ELEV = 14.42' C.C.D.

PROJECT

NORR PROJECT NO.: NICH15.0258.00

**110 W. HURON HOTEL**  
 New Construction

110 W. Huron Street,  
 Chicago, Illinois 60654

DEVELOPER

AP 100 W HURON PROPERTY, LLC

640 North LaSalle Street  
 Chicago, IL 60654 t 312.445.9094

ARCHITECT

**NORR**  
 ARCHITECTS ENGINEERS PLANNERS

325 N LaSalle St. Suite 500  
 Chicago, IL 60654  
 p 312.424.2400 f 312.424.2424

STRUCTURAL ENGINEER

**cea&a**  
 STRUCTURAL ENGINEERS

175 North Franklin, Suite 410  
 Chicago, IL 60654  
 t 312.750.1701

MEP DESIGN/BUILD

**Cosentini**  
 A TETRA TECH COMPANY

1 South Wacker Drive #37  
 Chicago, Illinois 60606  
 t 312.670.1800

LANDSCAPE ARCHITECT

WOLFF LANDSCAPE INCORPORATED

307 North Michigan Avenue  
 Chicago, Illinois 60601  
 t 312.663.5494 f 312.663.5497

CIVIL ENGINEER

601 West Randolph Street  
 Chicago, Illinois 60661  
 t 312.463.0544



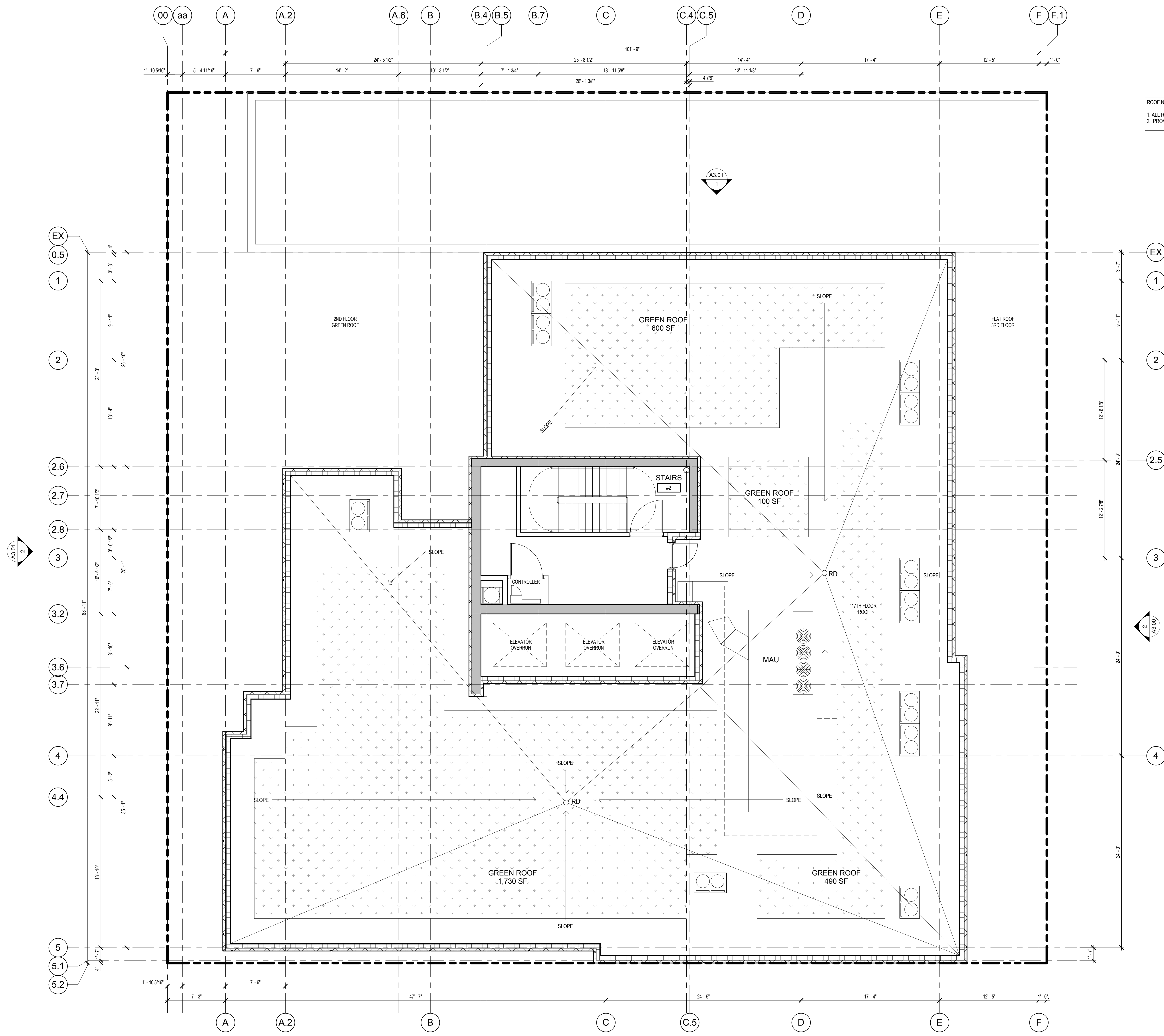
ISSUES / REVISIONS

| NO. | DATE | ISSUE |
|-----|------|-------|
|     |      |       |
|     |      |       |
|     |      |       |

FLOOR PLAN - FLOOR 17

PROFESSIONAL STAMP SHEET NUMBER

**A2.06**



ROOF NOTES:  
 1. ALL ROOFS SLOPE 1/4" TO DRAIN UNLESS NOTED OTHERWISE.  
 2. PROVIDE OVERFLOW DRAINS AT ALL ROOF DRAIN LOCATIONS.

1 FLOOR PLAN - PENTHOUSE  
 3/16" = 1'-0"  
 5' 0' 5' 10'

PROJECT  
 NORR PROJECT NO.: NICH15.0258.00  
**110 W. HURON HOTEL**  
 New Construction  
 110 W. Huron Street,  
 Chicago, Illinois 60654

DEVELOPER  
**AP 100 W HURON PROPERTY, LLC**

640 North LaSalle Street  
 Chicago, IL 60654 t 312.445.9094

ARCHITECT  
**NORR**  
 ARCHITECTS ENGINEERS PLANNERS

325 N LaSalle St. Suite 500  
 Chicago, IL 60654  
 p 312.424.2400 f 312.424.2424

STRUCTURAL ENGINEER  
**cea&a**  
 STRUCTURAL ENGINEERS

175 North Franklin, Suite 410  
 Chicago, IL 60654  
 t 312.750.1701

MEP DESIGN/BUILD  
**Cosentini**  
 A TETRA TECH COMPANY

1 South Wacker Drive #37  
 Chicago, Illinois 60606  
 t 312.670.1800

LANDSCAPE ARCHITECT  
**WOLFF LANDSCAPE INCORPORATED**

307 North Michigan Avenue  
 Chicago, Illinois 60601  
 t 312.663.5494 f 312.663.5497

CIVIL ENGINEER  
**ERIKSSON ENGINEERING ASSOCIATES, LTD.**  
 601 West Randolph Street  
 Chicago, Illinois 60661  
 t 312.463.0544

ISSUES / REVISIONS

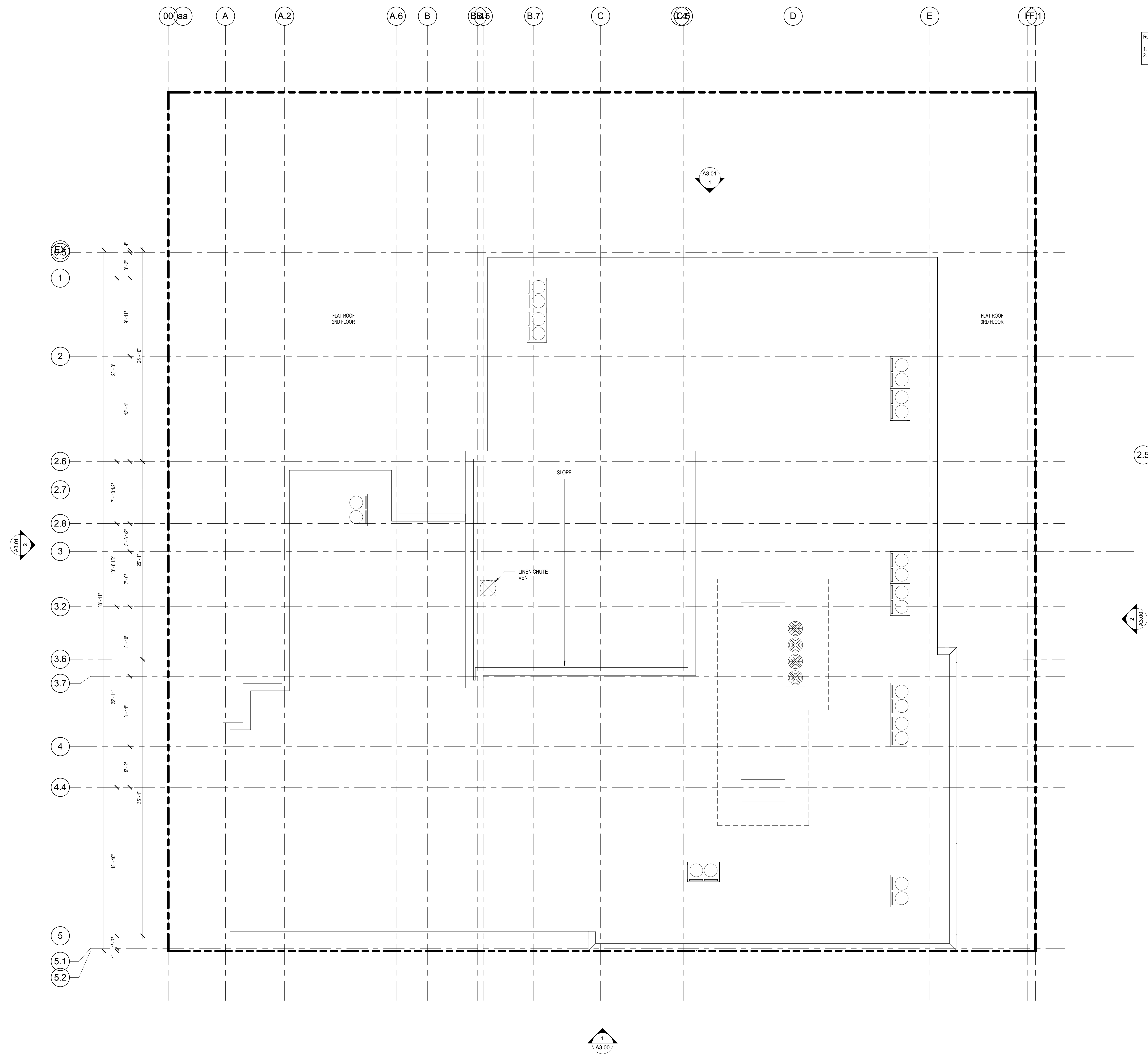
| NO. | DATE       | ISSUE            |
|-----|------------|------------------|
| 1   | 09.23.2016 | FOR COORDINATION |

SHEET TITLE  
**FLOOR PLAN - PENTHOUSE**

PROFESSIONAL STAMP SHEET NUMBER

**A2.07**





ROOF NOTES:  
 1. ALL ROOFS SLOPE 1/4" TO DRAIN UNLESS NOTED OTHERWISE  
 2. PROVIDE OVERFLOW DRAINS AT ALL ROOF DRAIN LOCATIONS

1 LEVEL PH ROOF  
 3/16" = 1'-0"  
 5' 0' 5' 10'

0'-0" ELEV = 14.42' C.C.D.

PROJECT  
 NORR PROJECT NO.: NICH15.0258.00  
**110 W. HURON HOTEL**  
*New Construction*  
 110 W. Huron Street,  
 Chicago, Illinois 60654

DEVELOPER  
**AP 100 W HURON PROPERTY, LLC**  
 640 North LaSalle Street  
 Chicago, IL 60654 t 312.445.9094

ARCHITECT  
**NORR**  
 ARCHITECTS ENGINEERS PLANNERS  
 325 N LaSalle St. Suite 500  
 Chicago, IL 60654  
 p 312.424.2400 f 312.424.2424

STRUCTURAL ENGINEER  
**cea&a**  
 STRUCTURAL ENGINEERS  
 175 North Franklin, Suite 410  
 Chicago, IL 60654  
 t 312.750.1701

MEP DESIGN/BUILD  
**Cosentini**  
 A TETRA TECH COMPANY  
 1 South Wacker Drive #37  
 Chicago, Illinois 60606  
 t 312.670.1800

LANDSCAPE ARCHITECT  
**WOLFF LANDSCAPE INCORPORATED**  
 307 North Michigan Avenue  
 Chicago, Illinois 60601  
 t 312.663.5494 f 312.663.5497

CIVIL ENGINEER  
**ERIKSSON ENGINEERING ASSOCIATES, LTD.**  
 601 West Randolph Street  
 Chicago, Illinois 60661  
 t 312.463.0544

ISSUES / REVISIONS

| NO.        | DATE             | ISSUE |
|------------|------------------|-------|
| 09.23.2016 | FOR COORDINATION |       |

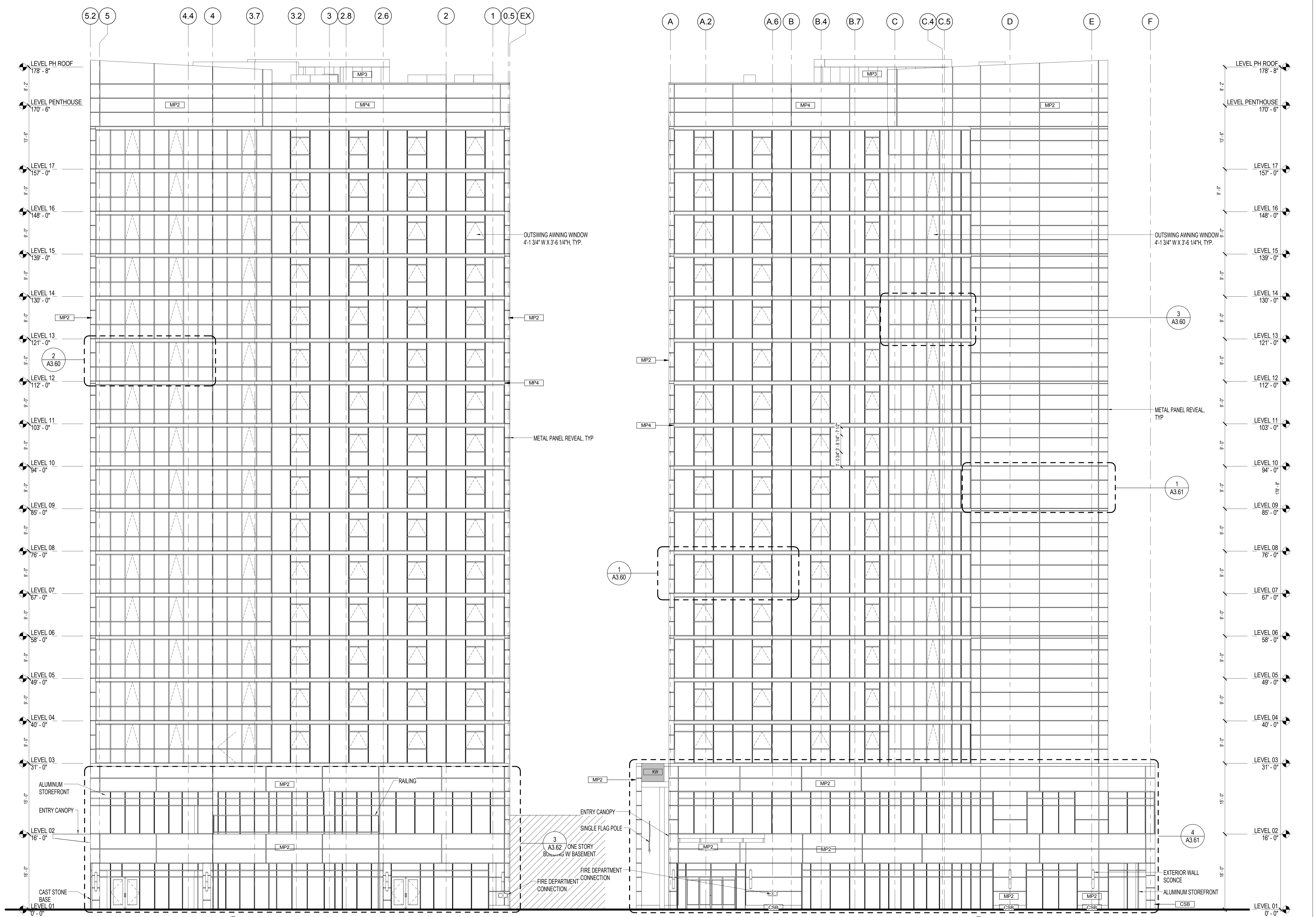
SHEET TITLE  
**PENTHOUSE ROOF PLAN**  
 PROFESSIONAL STAMP SHEET NUMBER

**A2.08**

**GENERAL NOTES:**

- ALL GLAZING TO BE INSULATING, U = 0.25 MIN, SHGC = 0.25 MIN
- PROVIDE ONE OUTSWING AWNING WINDOW IN EVERY GUESTROOM W/ 4" LIMIT STOP.
- PROVIDE TEMPERED GLAZING FOR BOTH LITES OF IGU AT ALL LOCATIONS REQUIRED BY CODE.

| EXTERIOR MATERIAL KEY |  |                                      |
|-----------------------|--|--------------------------------------|
| MP1                   | METAL PANEL WALL 1                     | DARK BROWN, HORIZONTAL - 6" OC       |
| MP2                   | METAL PANEL WALL 2                     | LIGHT BROWN, HORIZONTAL - 2' - 6" OC |
| MP3                   | METAL PANEL WALL 3                     | BLACK, VERTICAL                      |
| MP4                   | METAL PANEL WALL 4 / SLAB COVER        | WHITE, HORIZONTAL                    |
| MP5                   | METAL PANEL WALL 5                     | CORRUGATED BLACK, HORIZONTAL         |
| CSB                   | STONE BASE                             | CAST STONE                           |
| CMU                   | CMU DEMISING WALL                      | INSULTECH INSULATED CONCRETE BLOCK   |
|                       | WINDOW WALL W/ OPERABLE AWNING WINDOWS | OLD CASTLE WINDOW WALL, SSG          |
|                       | ALUMINUM STOREFRONT FRAMES & DOORS     | CLEAR ANODIZED ALUMINUM              |
| KW                    | ILLUMINATED KALWALL WITH LIGHTBOX      |                                      |
|                       | RAILING & FRAMING                      | DARK GREY                            |



2 EAST ELEVATION (CLARK STREET)  
1/8" = 1'-0"

1 SOUTH ELEVATION (HURON STREET)  
1/8" = 1'-0"

0'-0" ELEV = 14.42' C.C.D.

PROJECT  
NORR PROJECT NO.: NICH15.0258.00  
**110 W. HURON HOTEL**  
New Construction

110 W. Huron Street,  
Chicago, Illinois 60654

DEVELOPER  
**AP 100 W HURON PROPERTY, LLC**

640 North LaSalle Street  
Chicago, IL 60654 t 312.445.9094

ARCHITECT  
**NORR**  
ARCHITECTS ENGINEERS PLANNERS

325 N LaSalle St. Suite 500  
Chicago, IL 60654  
p 312.424.2400 f 312.424.2424

STRUCTURAL ENGINEER  
**cea&a**  
STRUCTURAL ENGINEERS

175 North Franklin, Suite 410  
Chicago, IL 60654  
t 312.750.1701

MEP DESIGN/BUILD  
**Cosentini**  
A TETRA TECH COMPANY

1 South Wacker Drive #37  
Chicago, Illinois 60606  
t 312.670.1800

LANDSCAPE ARCHITECT  
**WOLFF LANDSCAPE INCORPORATED**

307 North Michigan Avenue  
Chicago, Illinois 60601  
t 312.663.5494 f 312.663.5497

CIVIL ENGINEER  
**ERIKESBOM ENGINEERING ASSOCIATES, LTD.**

601 West Randolph Street  
Chicago, Illinois 60661  
t 312.463.0544

ISSUES / REVISIONS

NO. DATE ISSUE

SHEET TITLE  
**SOUTH (HURON STREET) & EAST (CLARK STREET) ELEVATIONS**

PROFESSIONAL STAMP SHEET NUMBER

**A3.00**



- GENERAL NOTES:**
- ALL GLAZING TO BE INSULATING, U = 0.25 MIN, SHGC = 0.25 MIN
  - PROVIDE ONE OUTSWING AWNING WINDOW IN EVERY GUESTROOM W/ 4" LIMIT STOP.
  - PROVIDE TEMPERED GLAZING FOR BOTH LITES OF IGU AT ALL LOCATIONS REQUIRED BY CODE.

| EXTERIOR MATERIAL KEY |  |                                      |
|-----------------------|--|--------------------------------------|
| MP1                   | METAL PANEL WALL 1                     | DARK BROWN, HORIZONTAL - 6" OC       |
| MP2                   | METAL PANEL WALL 2                     | LIGHT BROWN, HORIZONTAL - 2' - 6" OC |
| MP3                   | METAL PANEL WALL 3                     | BLACK, VERTICAL                      |
| MP4                   | METAL PANEL WALL 4 / SLAB COVER        | WHITE, HORIZONTAL                    |
| MP5                   | METAL PANEL WALL 5                     | CORRUGATED BLACK, HORIZONTAL         |
| CSB                   | STONE BASE                             | CAST STONE                           |
| CMU                   | CMU DEMISING WALL                      | INSULTECH INSULATED CONCRETE BLOCK   |
|                       | WINDOW WALL W/ OPERABLE AWNING WINDOWS | OLD CASTLE WINDOW WALL, SSG          |
|                       | ALUMINUM STOREFRONT FRAMES & DOORS     | CLEAR ANODIZED ALUMINUM              |
| KW                    | ILLUMINATED KALWALL WITH LIGHTBOX      |                                      |
|                       | RAILING & FRAMING                      | DARK GREY                            |



PROJECT  
 NORR PROJECT NO.: NICH15.0258.00  
**110 W. HURON HOTEL**  
 New Construction  
 110 W. Huron Street,  
 Chicago, Illinois 60654

DEVELOPER  
**AP 100 W HURON PROPERTY, LLC**

640 North LaSalle Street  
 Chicago, IL 60654 t 312.445.9094

ARCHITECT  
**NORR**  
 ARCHITECTS ENGINEERS PLANNERS

325 N LaSalle St. Suite 500  
 Chicago, IL 60654  
 p 312.424.2400 f 312.424.2424

STRUCTURAL ENGINEER  
**cea&a**  
 STRUCTURAL ENGINEERS

175 North Franklin, Suite 410  
 Chicago, IL 60654  
 t 312.750.1701

MEP DESIGN/BUILD  
**Cosentini**  
 A TETRA TECH COMPANY

1 South Wacker Drive #37  
 Chicago, Illinois 60606  
 t 312.670.1800

LANDSCAPE ARCHITECT  
**WOLFF LANDSCAPE INCORPORATED**

307 North Michigan Avenue  
 Chicago, Illinois 60601  
 t 312.663.5494 f 312.663.5497

CIVIL ENGINEER  
**ERIKSSON ENGINEERING ASSOCIATES, LTD.**  
 601 West Randolph Street  
 Chicago, Illinois 60661  
 t 312.463.0544

ISSUES / REVISIONS

| NO.        | DATE         | ISSUE |
|------------|--------------|-------|
| 09.01.2016 | PROGRESS SET |       |

SHEET TITLE  
**NORTH & WEST (ALLEY) ELEVATIONS**

PROFESSIONAL STAMP SHEET NUMBER

**A3.01**

0'-0" ELEV = 14.42' C.C.D.