

THE HUDSON



onni
group



DANIEL WEINBACH
&
PARTNERS, LTD.

PAPPAGEORGE
HAYMES



Context Plan

onni
group



DANIEL WEINBACH
&
PARTNERS, LTD.

PAPPAGEORGE
HAYMES



Previous West Perspective



Current West Perspective

Before & After: West Perspective

onni
group



DANIEL WEINBACH
&
PARTNERS, LTD.

PAPPAGEORGE
HAYMES



Previous East Perspective



Current East Perspective

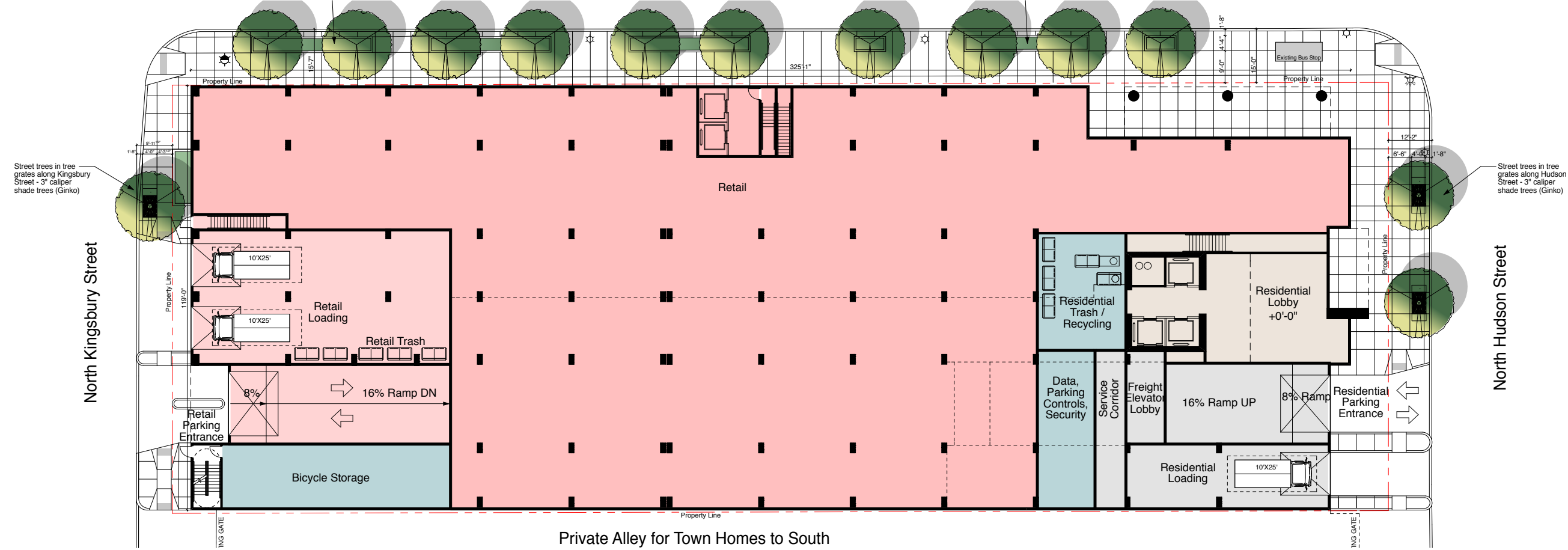
Before & After: East Perspective

onni
group

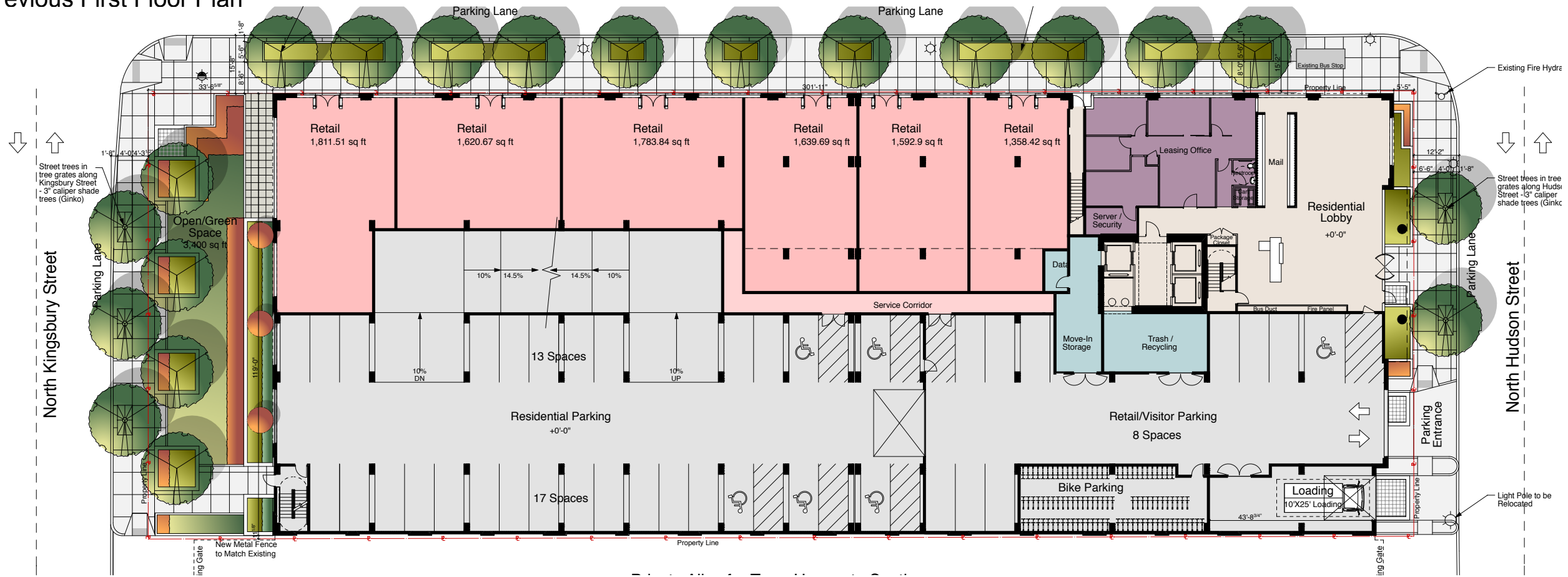


DANIEL WEINBACH
&
PARTNERS, LTD.

PAPPAGEORGE
HAYMES



Previous First Floor Plan



Current First Floor Plan

Before & After: First Floor Plan



DANIEL WEINBACH & PARTNERS, LTD.

PAPPAGEORGE HAYMES



West Perspective

onni
group



DANIEL WEINBACH
&
PARTNERS, LTD.

PAPPAGEORGE
HAYMES

East Perspective

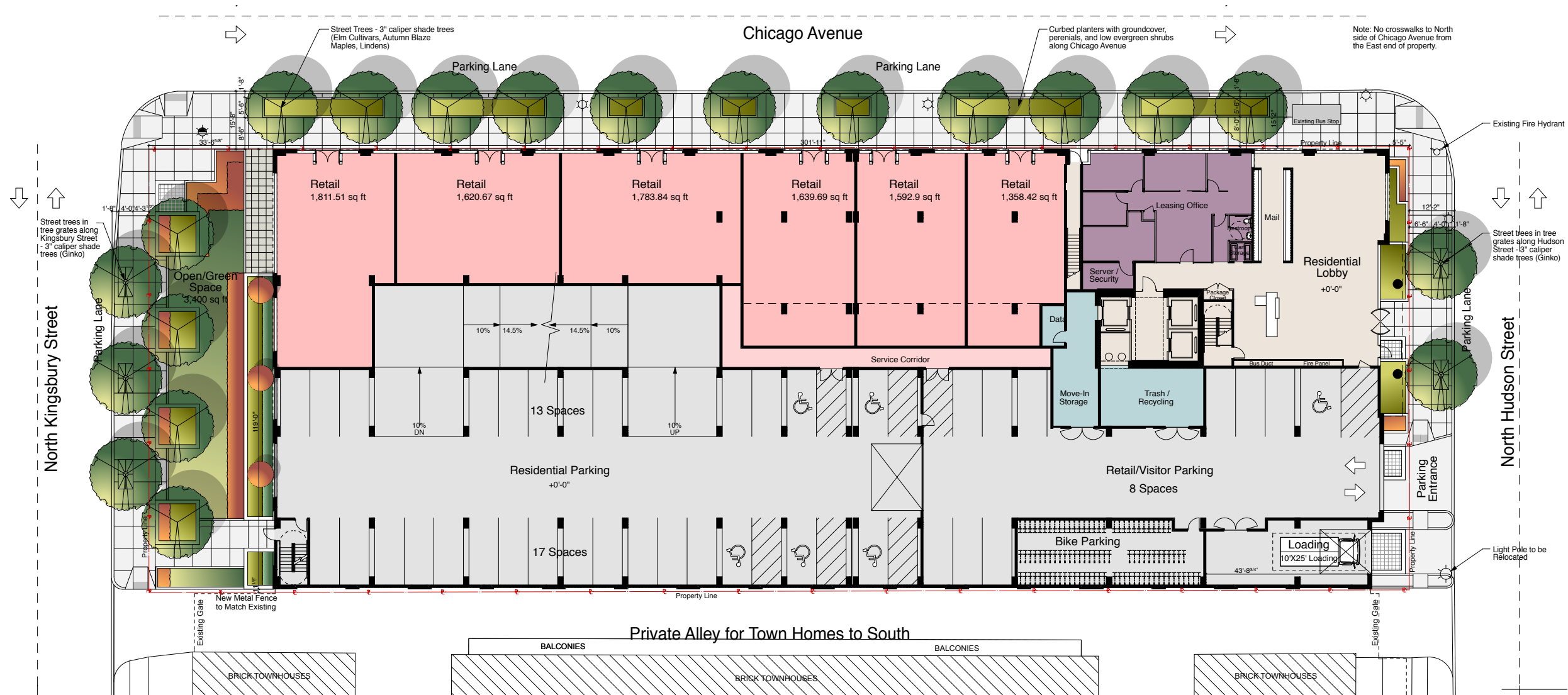


onni
group



DANIEL WEINBACH
&
PARTNERS, LTD.

PAPPAGEORGE
HAYMES



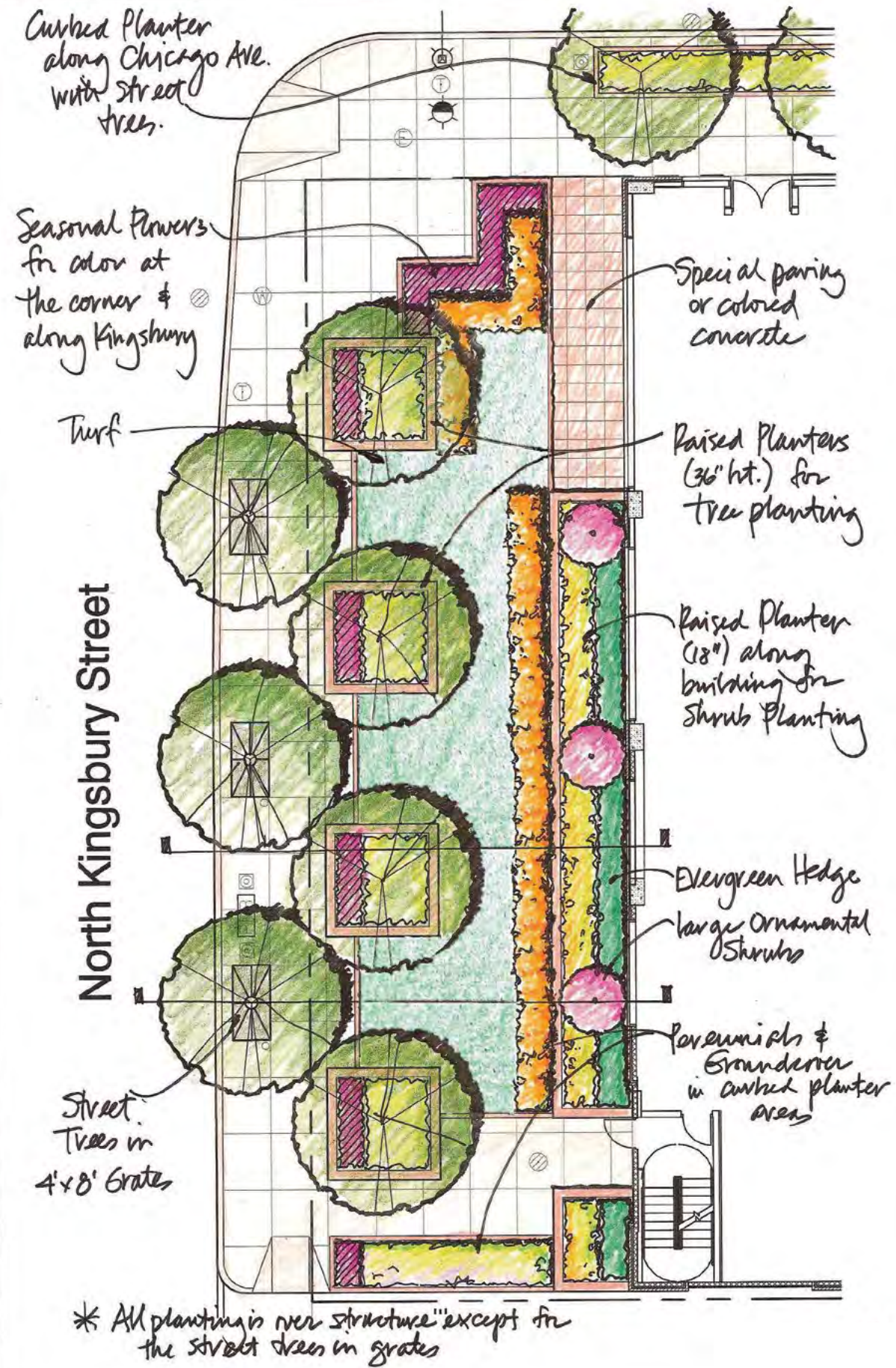
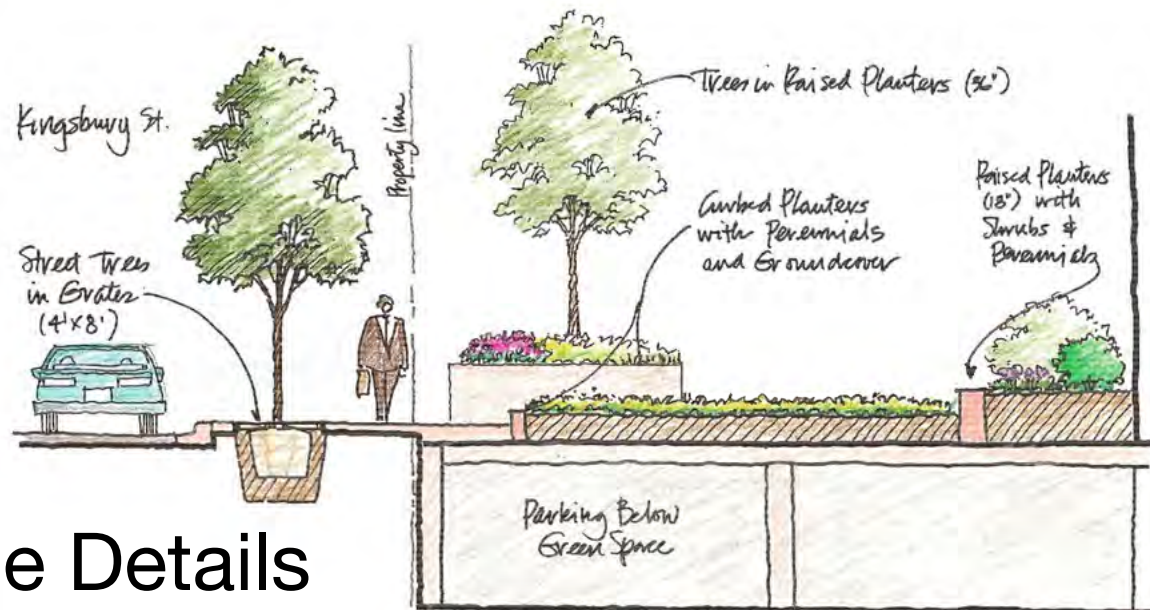
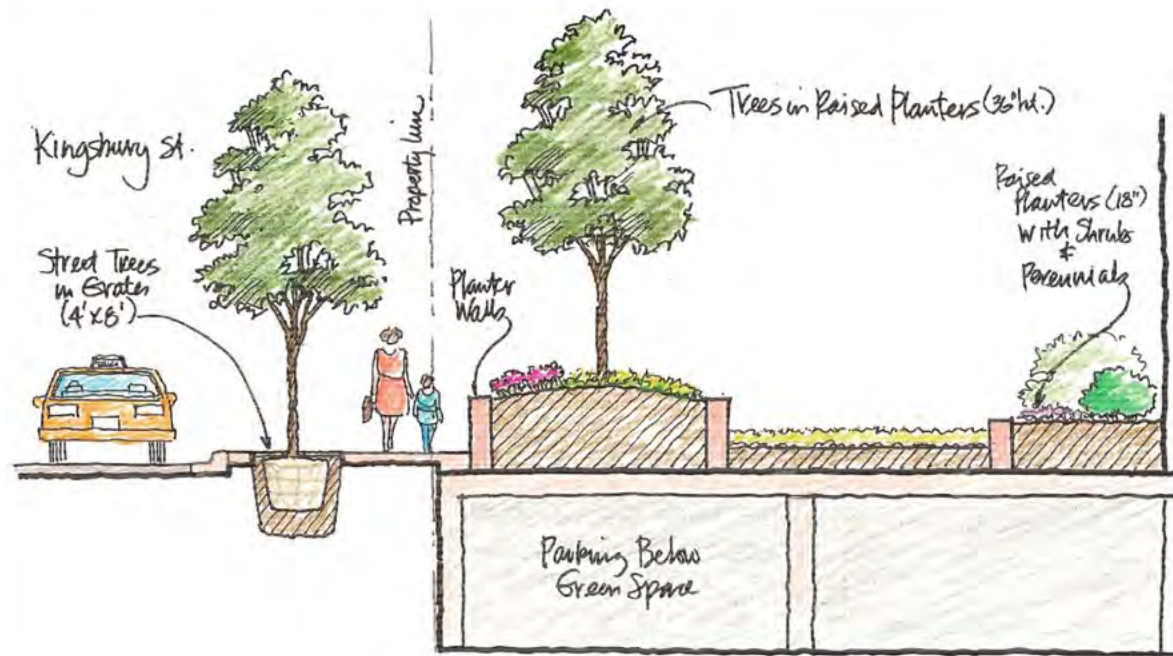
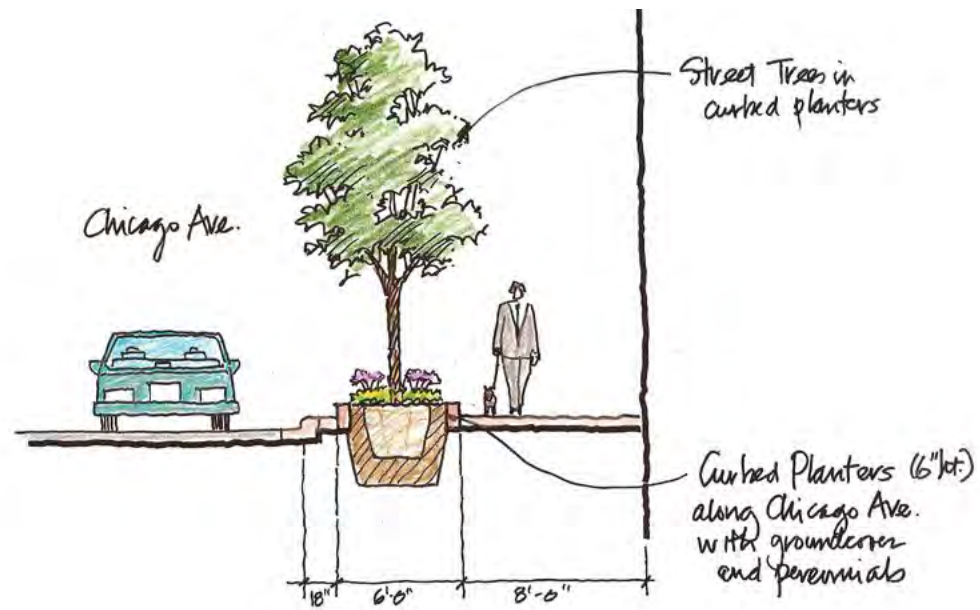
Ground Floor Plan

onni group



DANIEL WEINBACH & PARTNERS, LTD.

PAPPAGEORGE HAYMES



Landscape Details



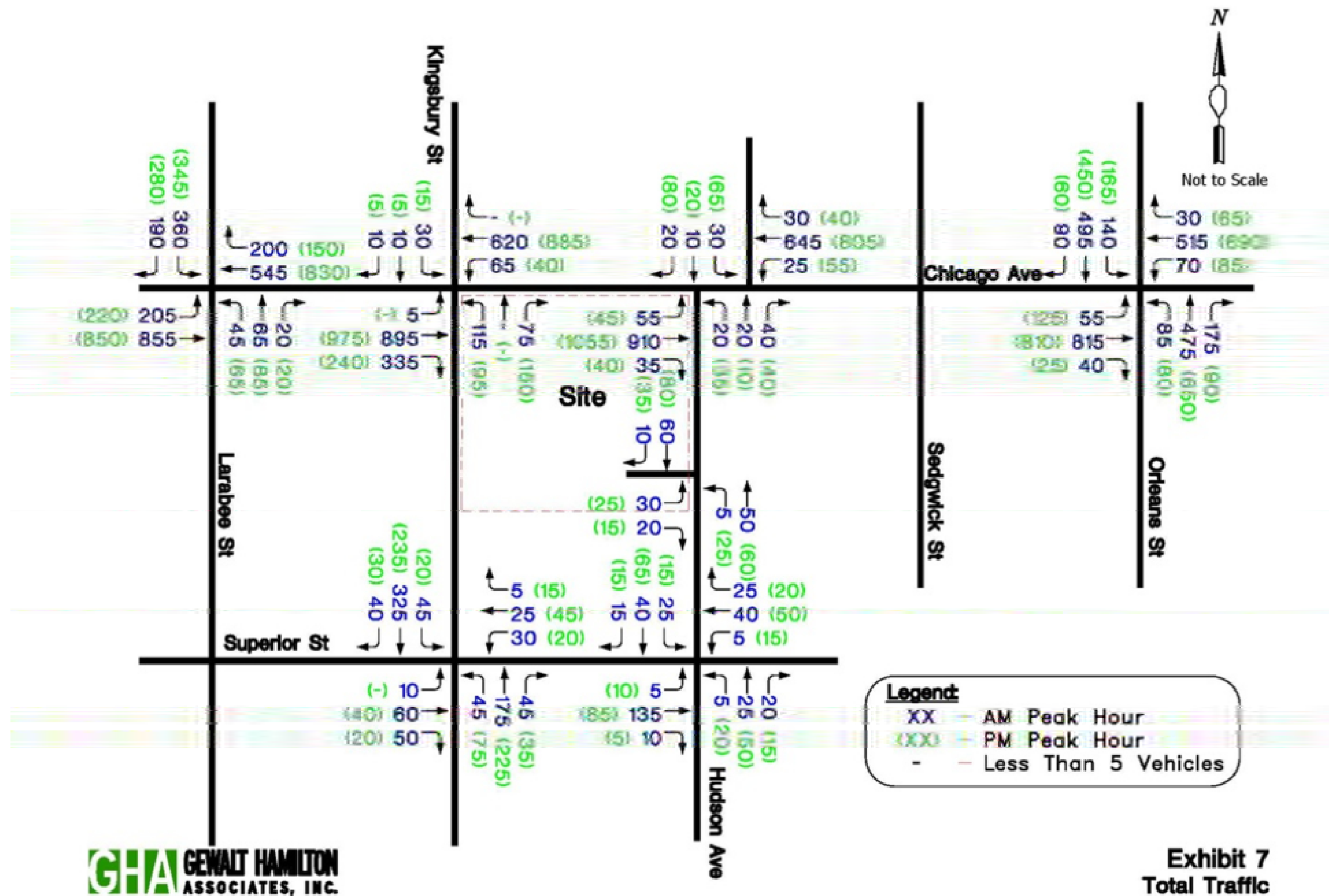
Context Plan

onni
group



DANIEL WEINBACH
&
PARTNERS, LTD.

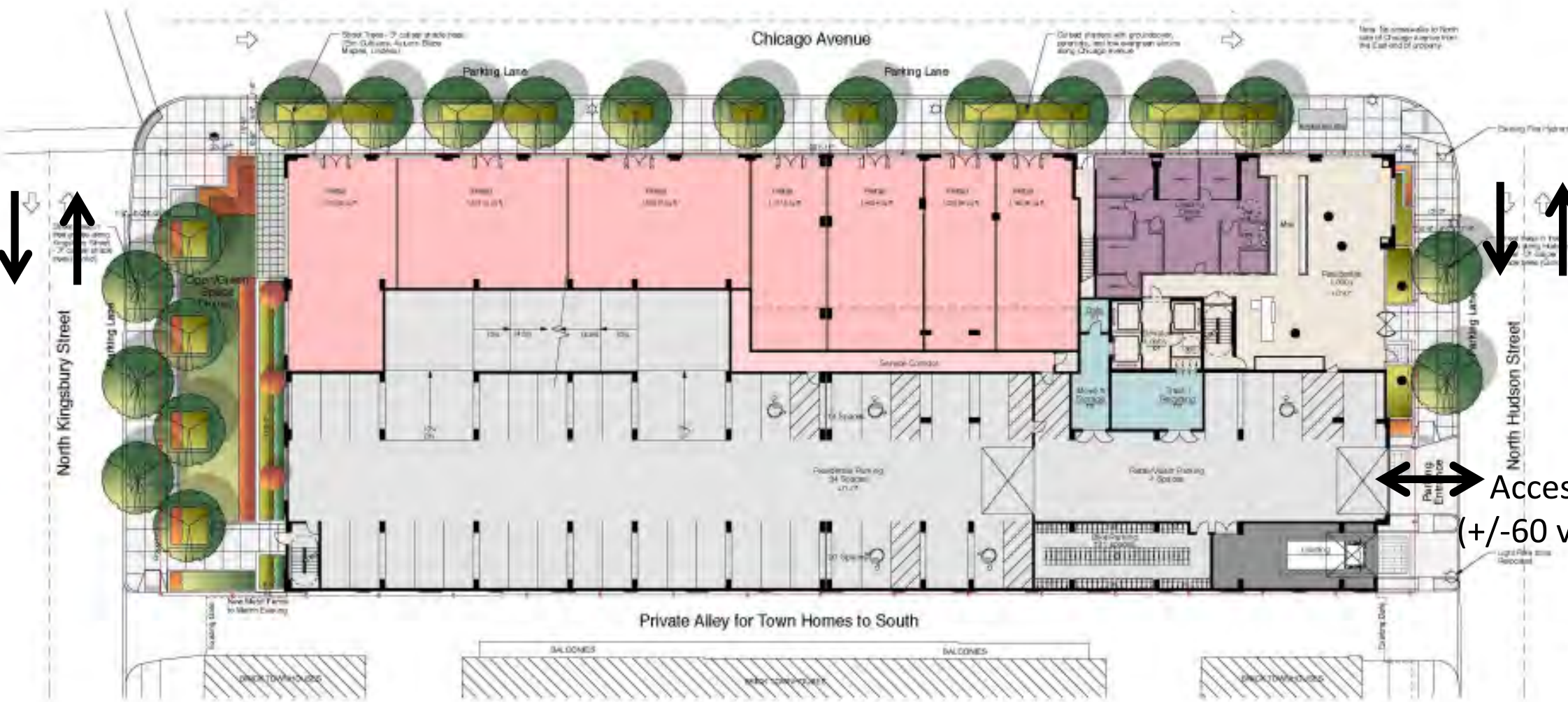
PAPPAGEORGE
HAYMES





Traffic Volumes

Collector/Heavier traffic volumes
(+/- 600 vph)



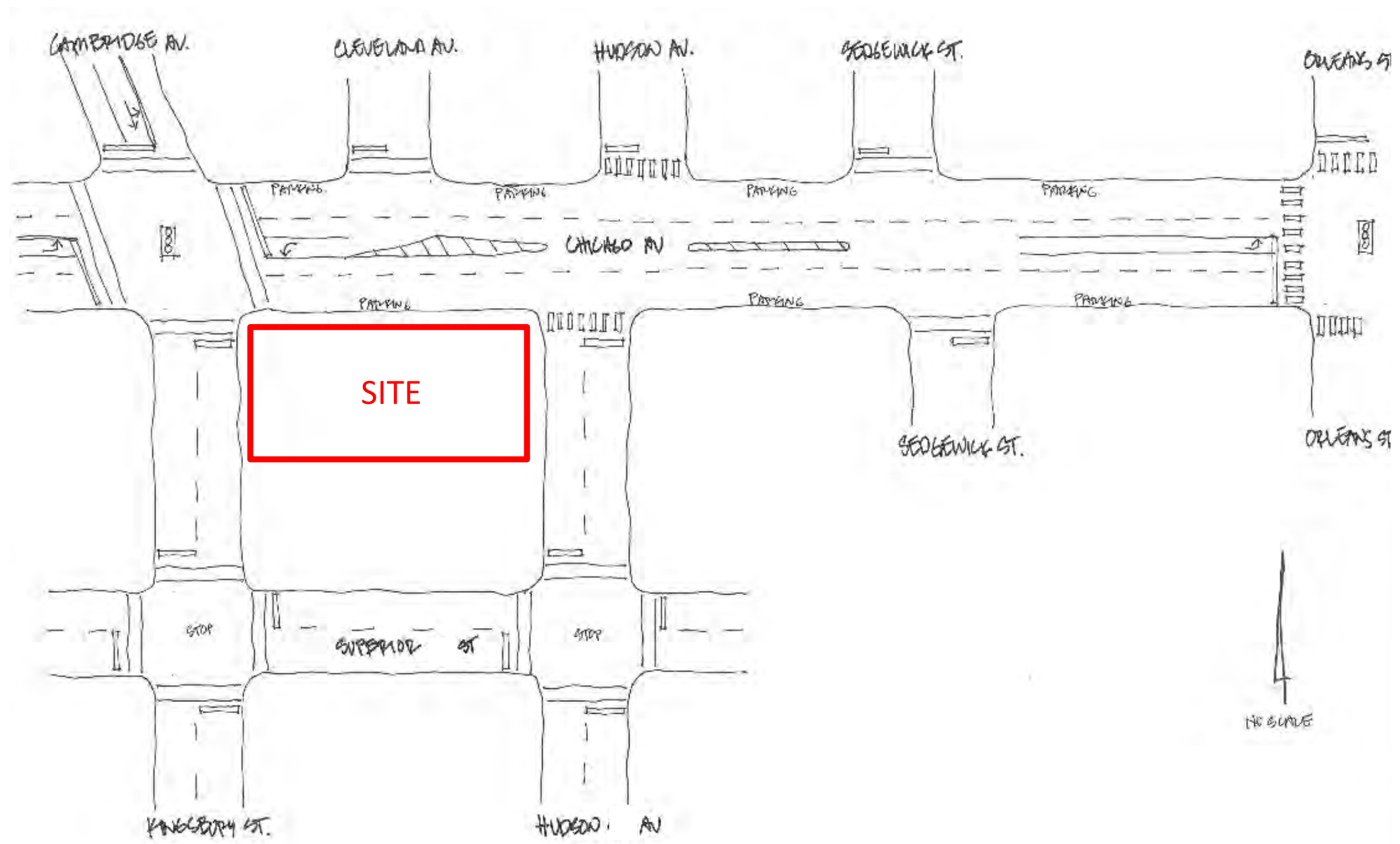
Lower traffic volumes
(+/- 200 vph)

Access
(+/- 60 vph)

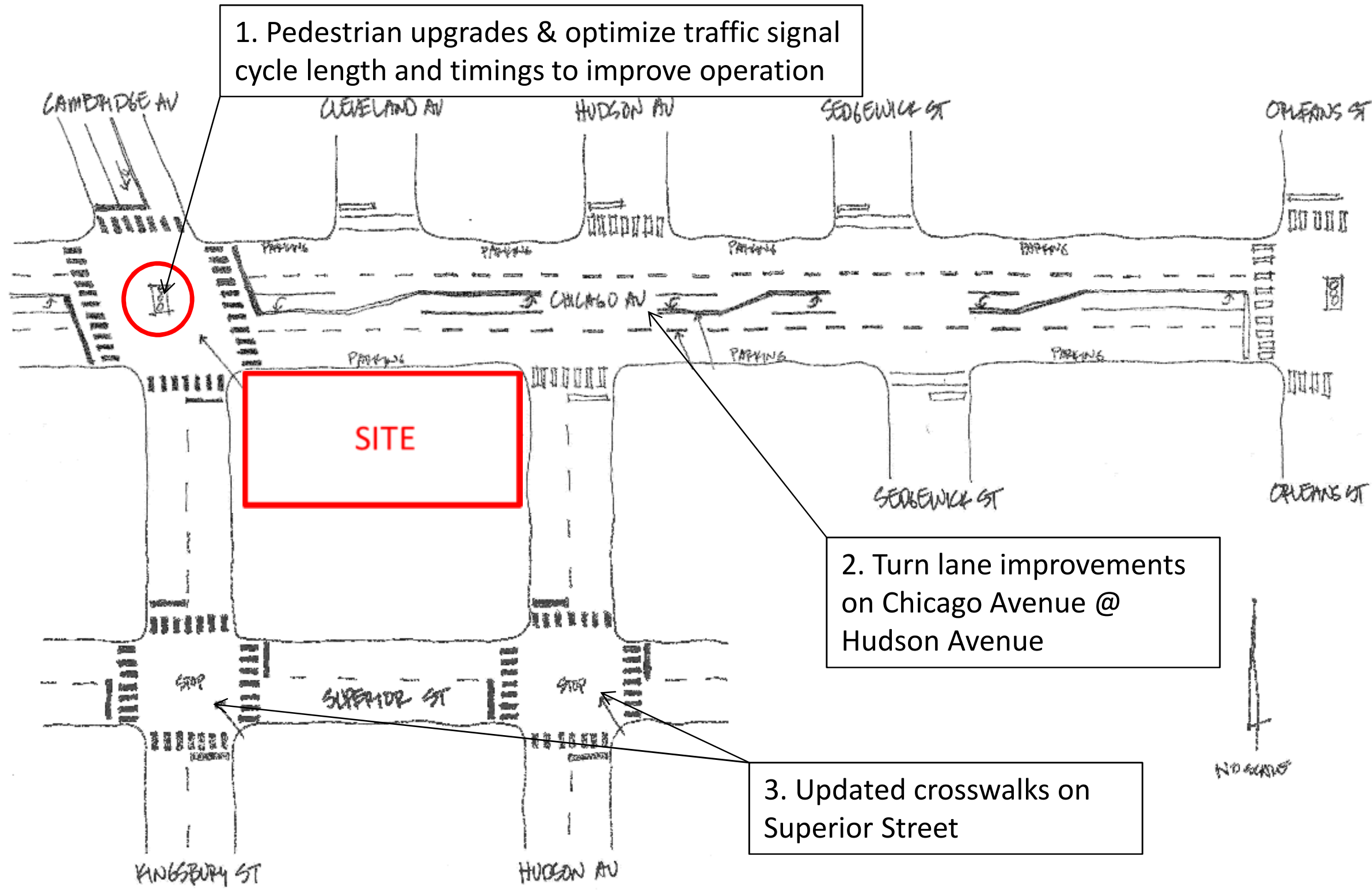


DANIEL WEINBACH
&
PARTNERS, LTD.





Existing Conditions



Proposed Conditions

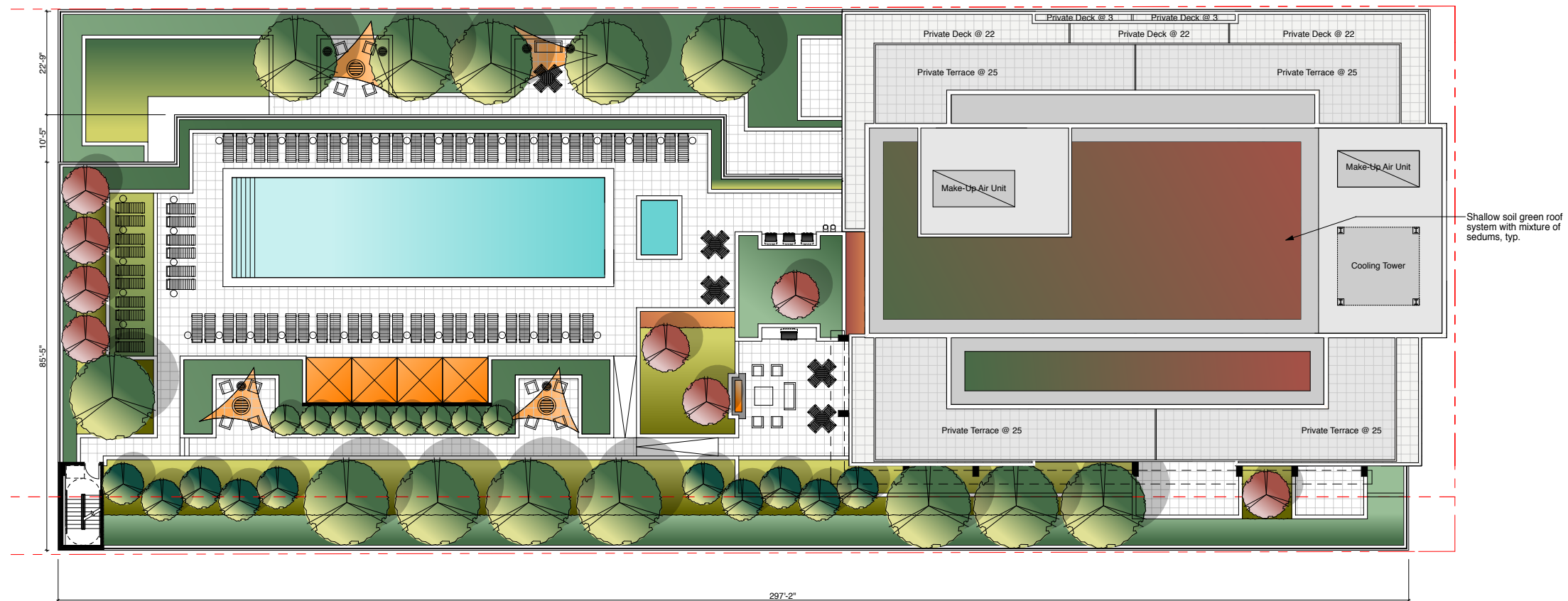


Typical Floor Plan



DANIEL WEINBACH
&
PARTNERS, LTD.

PAPPAGEORGE
HAYMES



Roof Plan



Perspective of Chicago & Hudson

onni
group



DANIEL WEINBACH
&
PARTNERS, LTD.

PAPPAGEORGE
HAYMES



Perspective of Kingsbury

onni
group



DANIEL WEINBACH
&
PARTNERS, LTD.

PAPPAGEORGE
HAYMES

The Hudson

An Onni Condominium Project

Hudson & Chicago
Chicago, Illinois

North Elevation



Zoning Height
+240'-0"

Material Legend

- 1 | Prefinished Aluminum Window System w/ Aluminum Slab Edge Cover
- 2 | Glass/Aluminum Balcony Rail System
- 3 | Elastomeric Coated Cast-in-Place Concrete
- 4 | Brick w/ Cast Stone Trim
- 5 | Prefinished Aluminum Storefront
- 6 | Glass/Aluminum Canopy
- 7 | Prefinished Aluminum Entrance Canopy

onni
group
Onni Group
developer



Amenity Floor
+30'-6"

3rd Floor
+18'-8"
At Chicago Ave.

pappageorgehaymes partners
www.pappageorgehaymes.com

1/31/14
P/H # 132188

These plans are schematic and are subject to further refinement for compliance with code required existing, life safety improvements and coordination with existing systems.

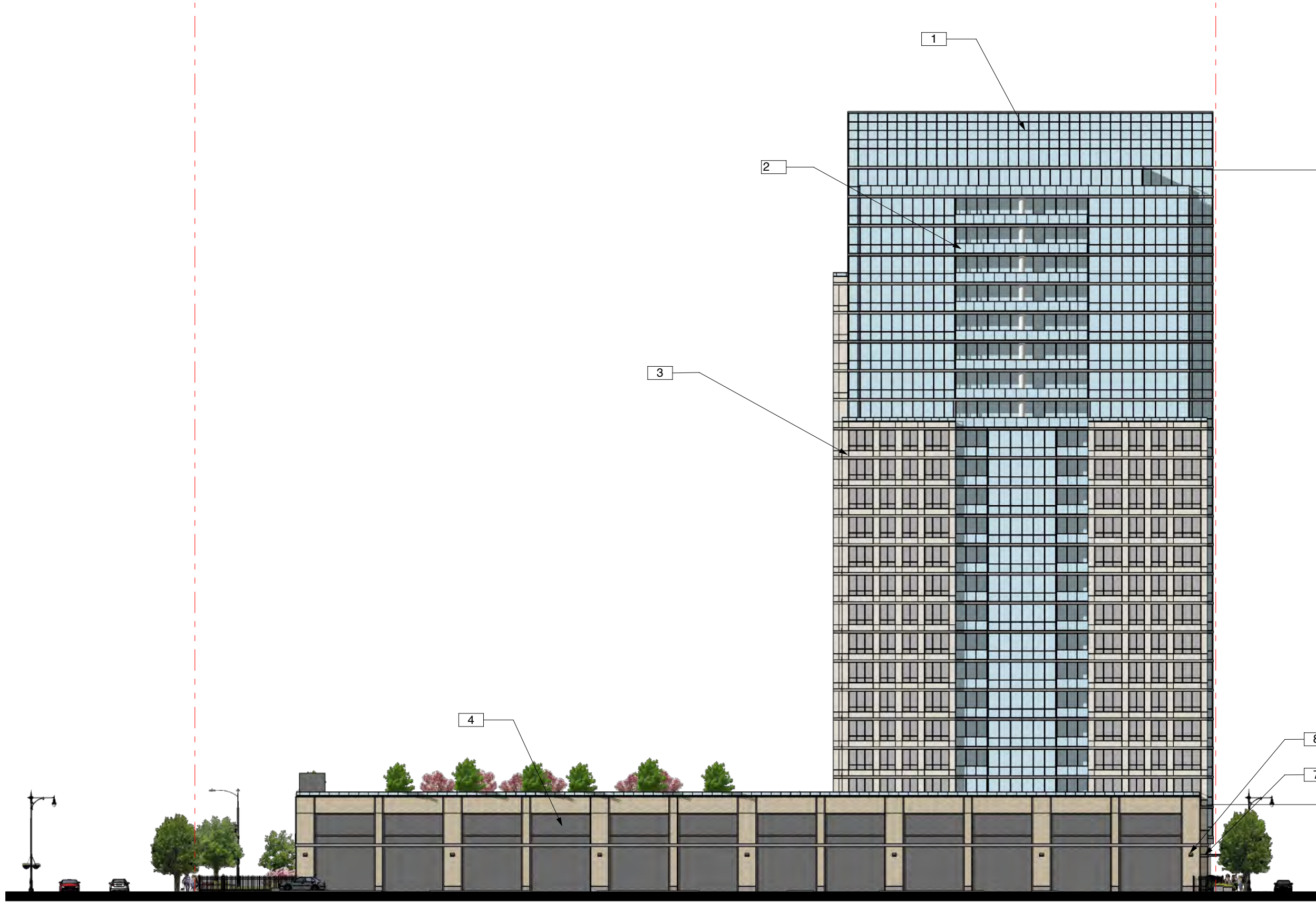
© COPYRIGHT PAPPAGEORGEHAYMES LTD. 2014

The Hudson

An Onni Condominium Project

Hudson & Chicago
Chicago, Illinois

South Elevation



Zoning Height
+240'-0"

Material Legend

1	Prefinished Aluminum Window System w/ Aluminum Slab Edge Cover
2	Glass/Aluminum Balcony Rail System
3	Elastomeric Coated Cast-in-Place Concrete
4	Brick w/ Cast Stone Trim
5	Prefinished Aluminum Storefront
6	Glass/Aluminum Canopy
7	Prefinished Aluminum Entrance Canopy
8	Recessed Down Aimed Security Lighting Typical Across Alley

onni
group
Onni Group
developer



Amenity Floor
+30'-6"

pappageorgehaymes partners
www.pappageorgehaymes.com

3/6/14
P/H # 132188

These plans are schematic and are subject to further refinement for compliance with code required existing, life safety improvements and coordination with existing systems.

© COPYRIGHT PAPPAGEORGEHAYMES LTD. 2014

The Hudson

An Onni Condominium Project

Hudson & Chicago
Chicago, Illinois

East & West Elevations



Zoning Height
+240'-0"

Material Legend

- | | |
|---|--|
| 1 | Prefinished Aluminum Window System w/ Aluminum Slab Edge Cover |
| 2 | Glass/Aluminum Balcony Rail System |
| 3 | Elastomeric Coated Cast-in-Place Concrete |
| 4 | Brick w/ Cast Stone Trim |
| 5 | Prefinished Aluminum Storefront |
| 6 | Glass/Aluminum Canopy |
| 7 | Prefinished Aluminum Entrance Canopy |

onni
Onni Group
developer



Amenity Floor
+30'-6"

3rd Floor
+18'-8"
At Chicago Ave.

pappageorgehaymes partners
www.pappageorgehaymes.com

1/31/14
P/H # 132188

These plans are schematic and are subject to further refinement for compliance with code required existing, life safety improvements and coordination with existing systems.