

Chicago Plan Commission



720 North LaSalle Street

August 21st, 2014



720 N. LaSalle Planned Development

Superior Park, LLC | 720 N. LaSalle St.

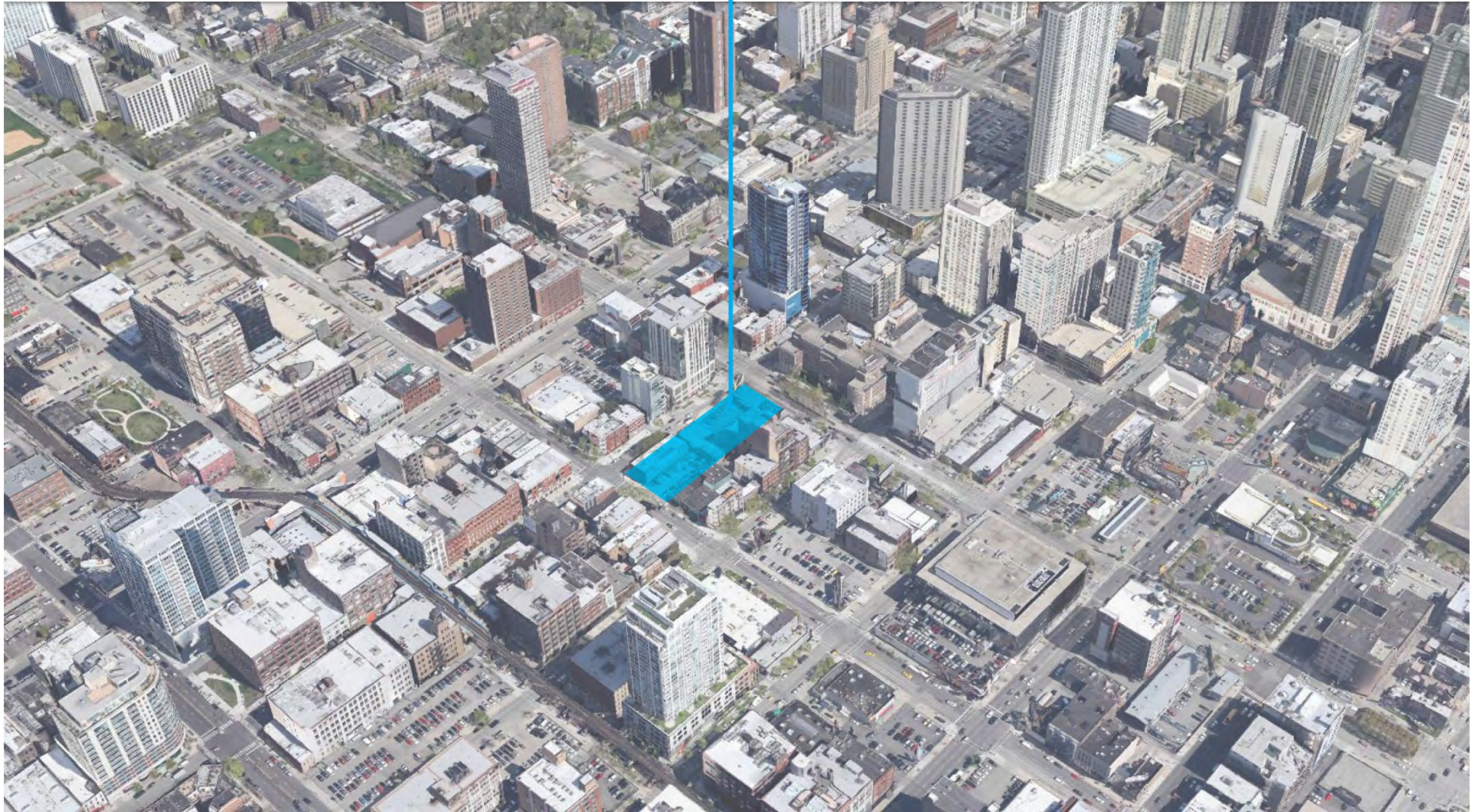
Chicago, Illinois 60610 | August 21, 2014

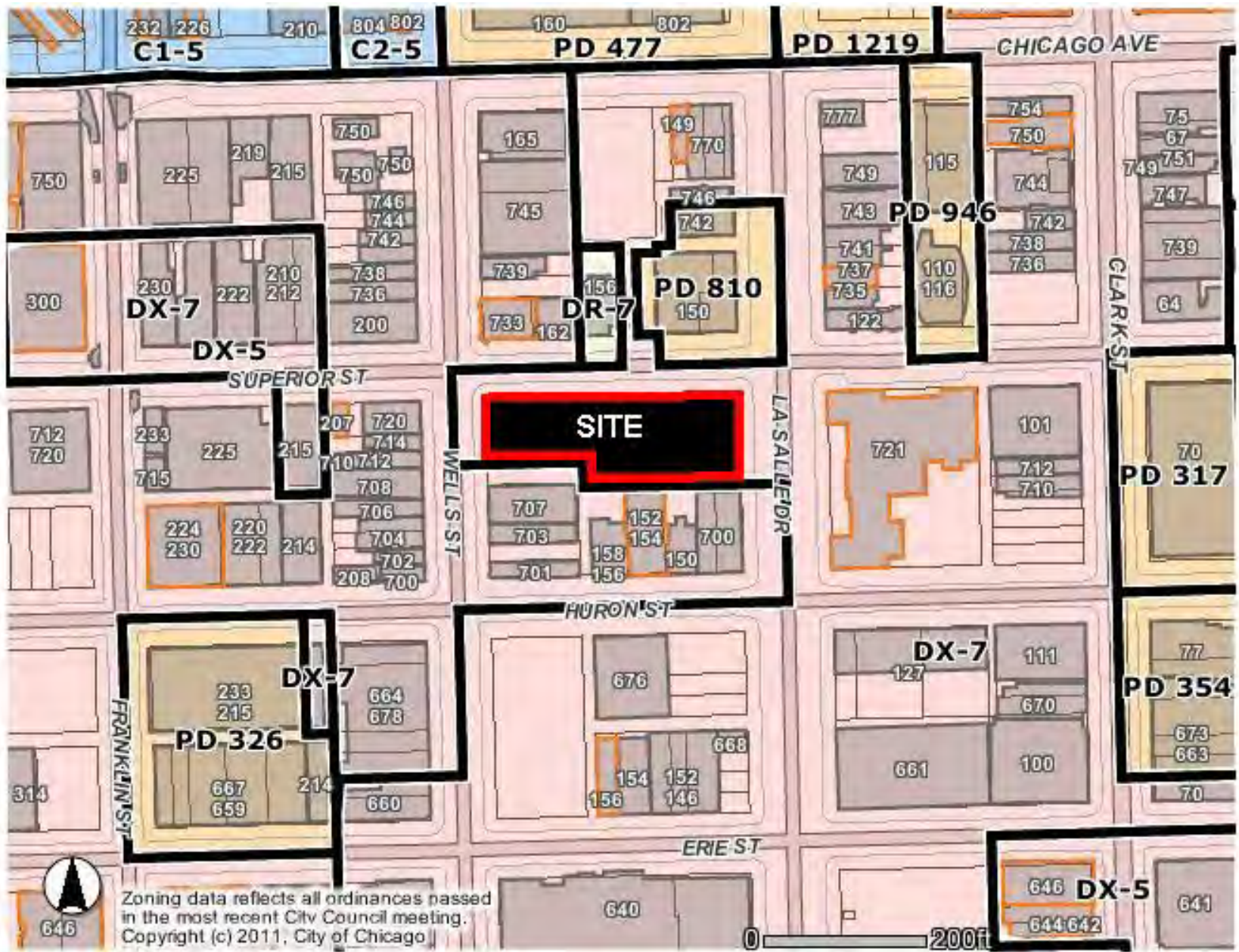
Building Renderings - Context



© 2014 bKL Architecture LLC

720 N. LaSalle





720 N. LaSalle Planned Development

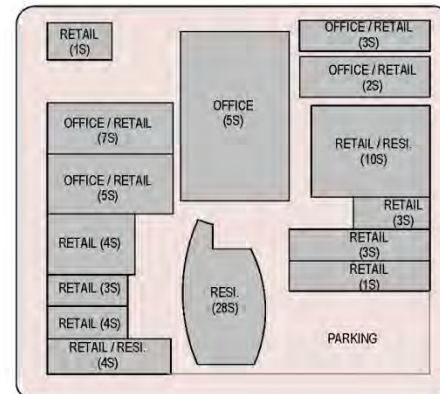
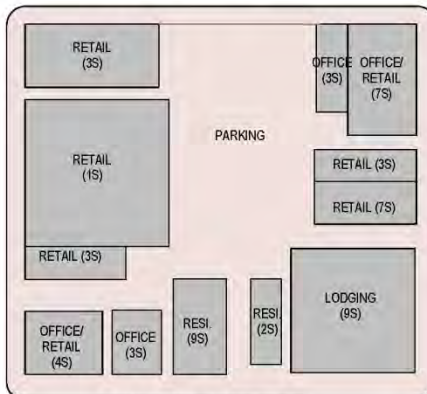
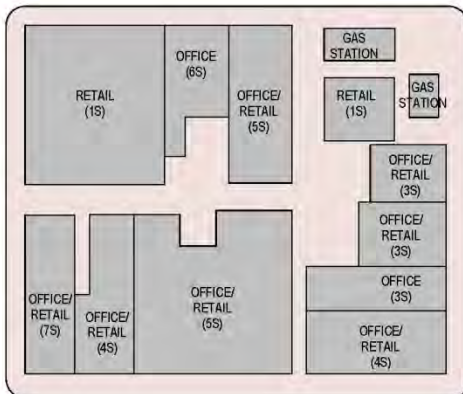
Superior Park, LLC | 720 N. LaSalle St.

Chicago, Illinois 60610 | August 21, 2014

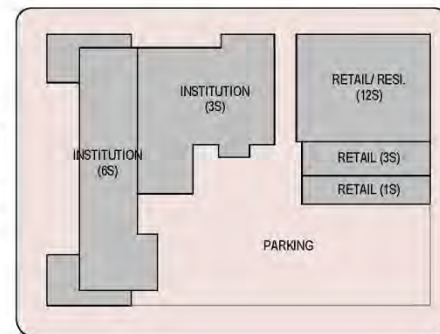
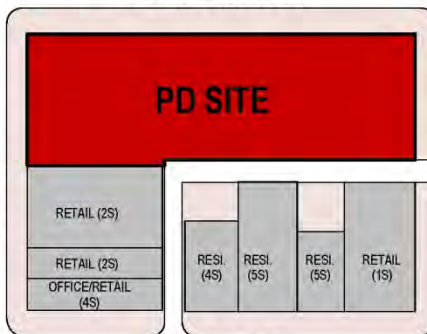
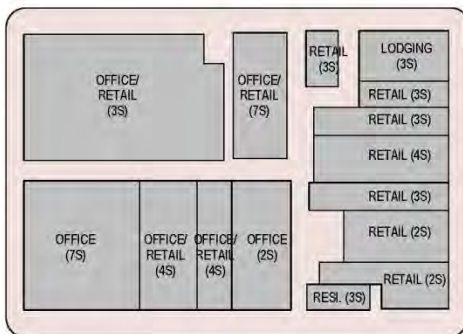
Existing Zoning Map



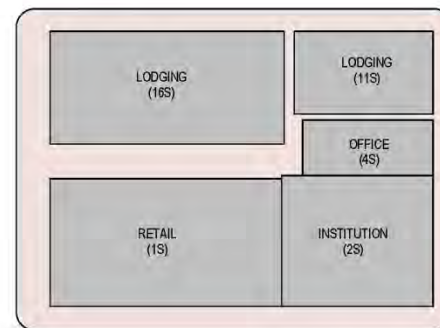
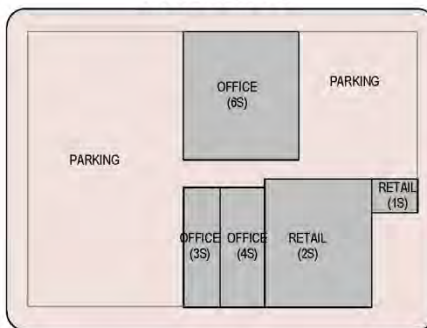
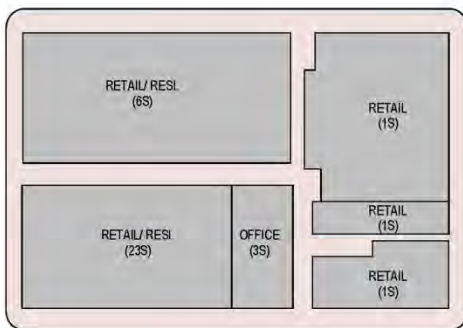
W. CHICAGO AVE.



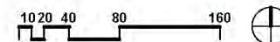
W. SUPERIOR ST.



W. HURON ST.



W. ERIE ST.



N. FRANKLIN ST.

N. WELLS ST.

N. LASALLE ST.

N. CLARK ST.



View looking Southwest on LaSalle and Superior Street intersection



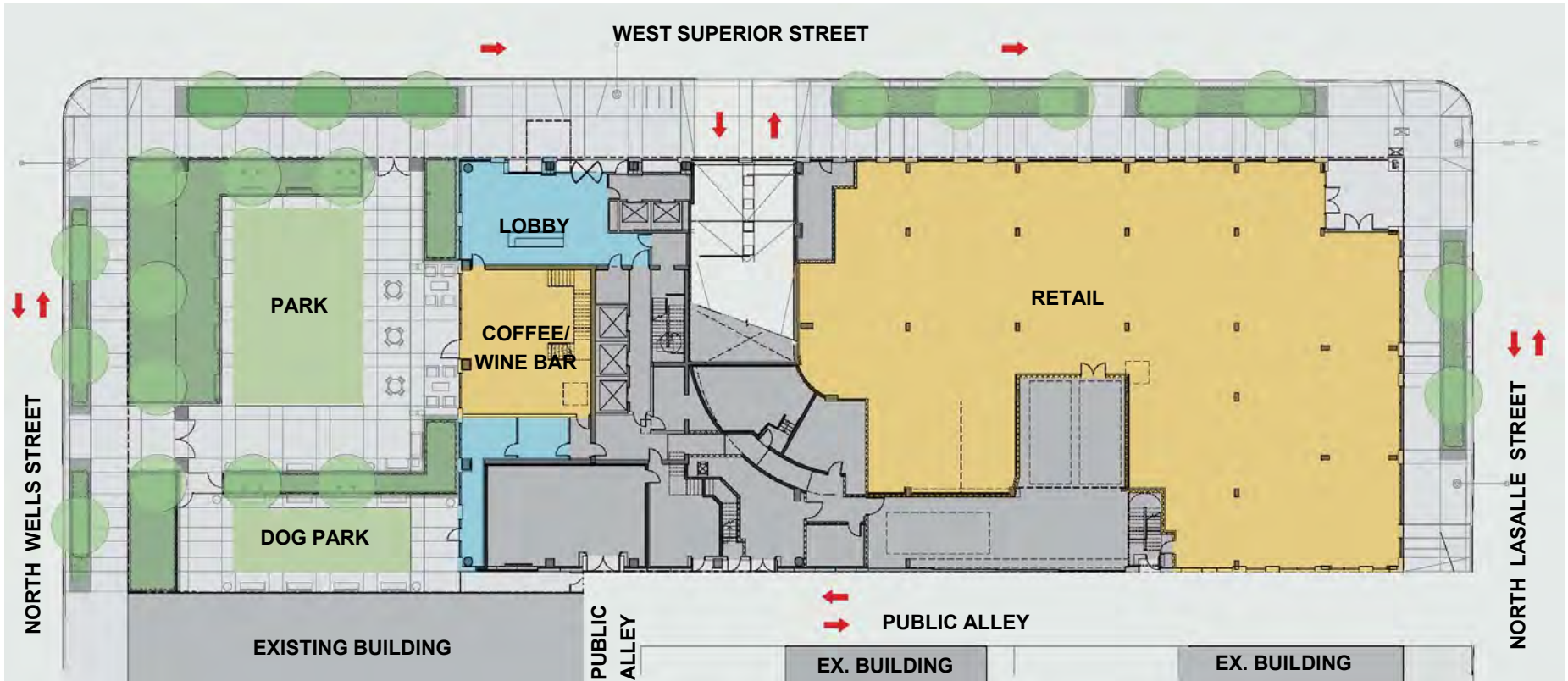
View looking West on LaSalle Street

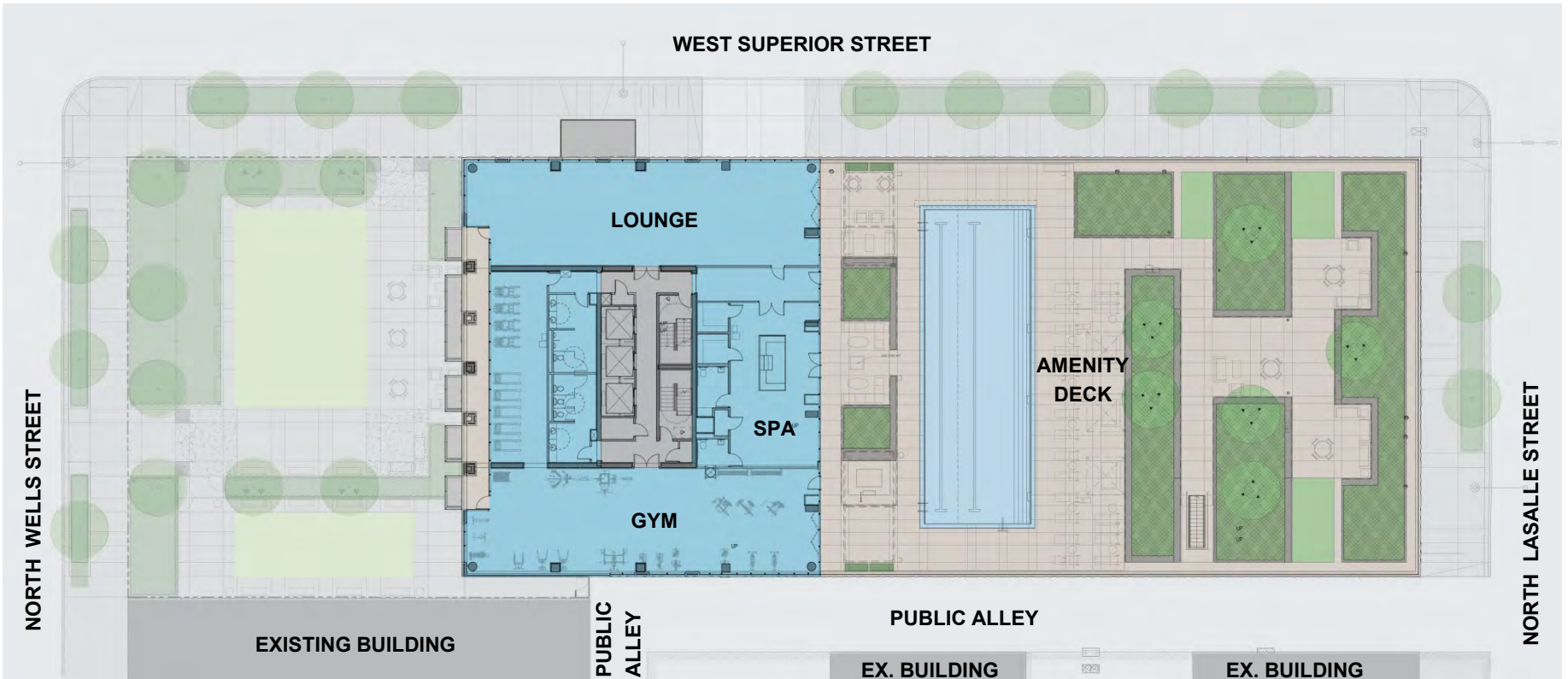


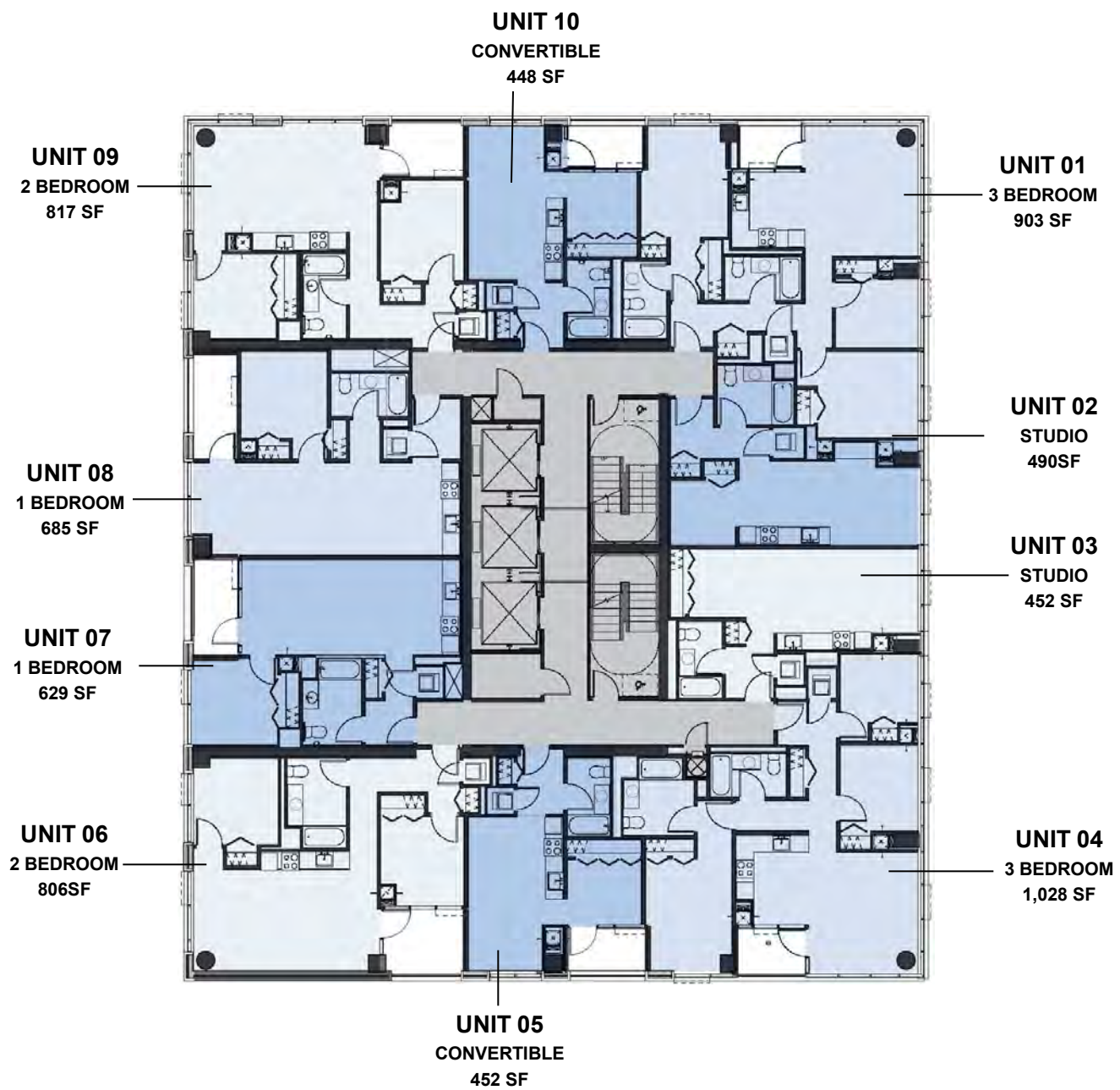
View looking Northeast on Superior and Wells Street intersection

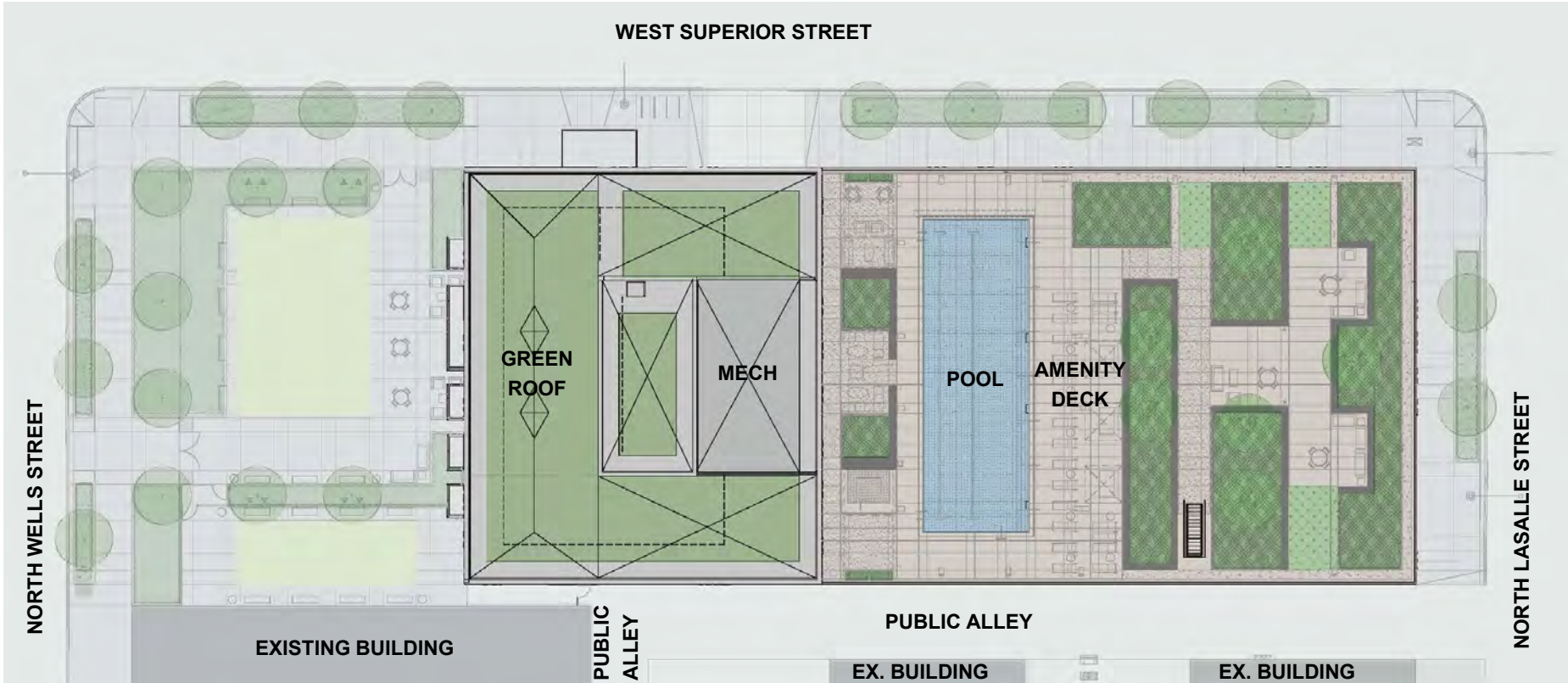


View looking East on Wells Street



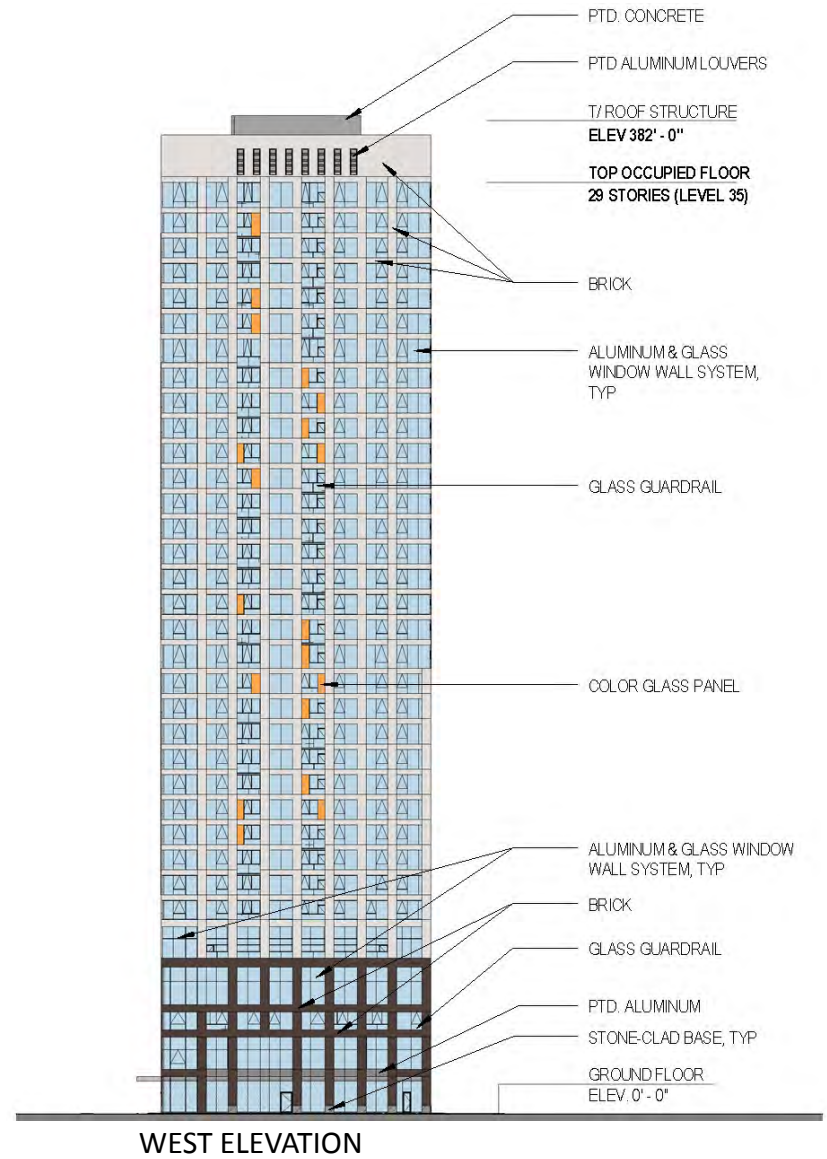
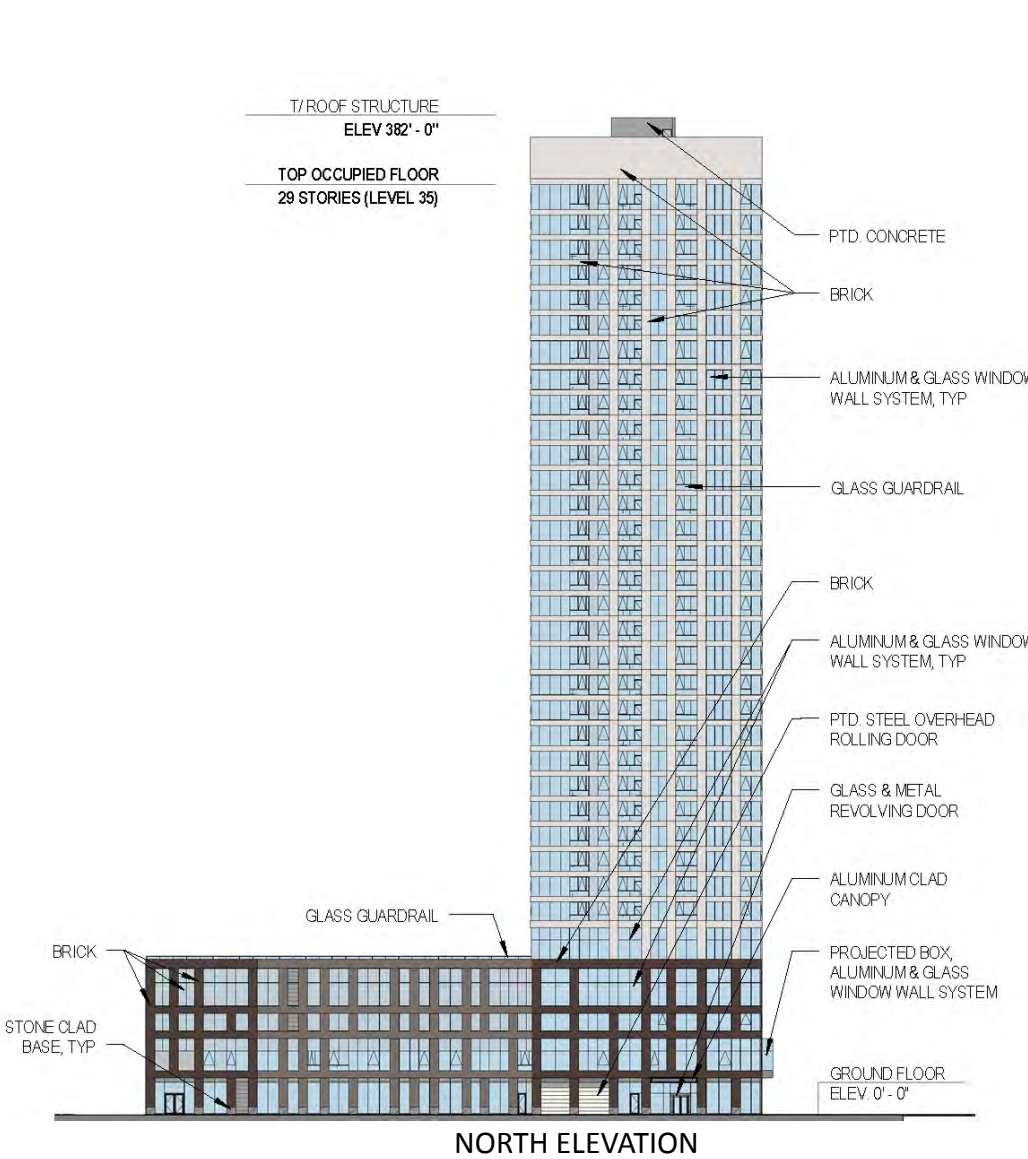


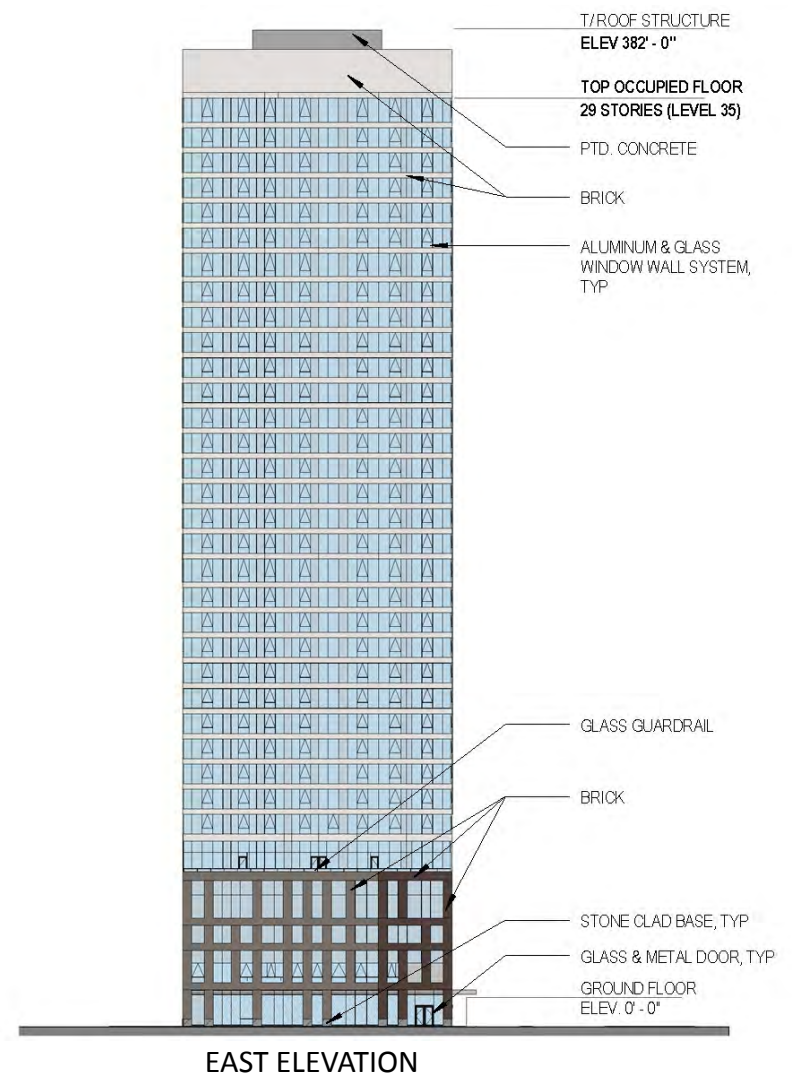
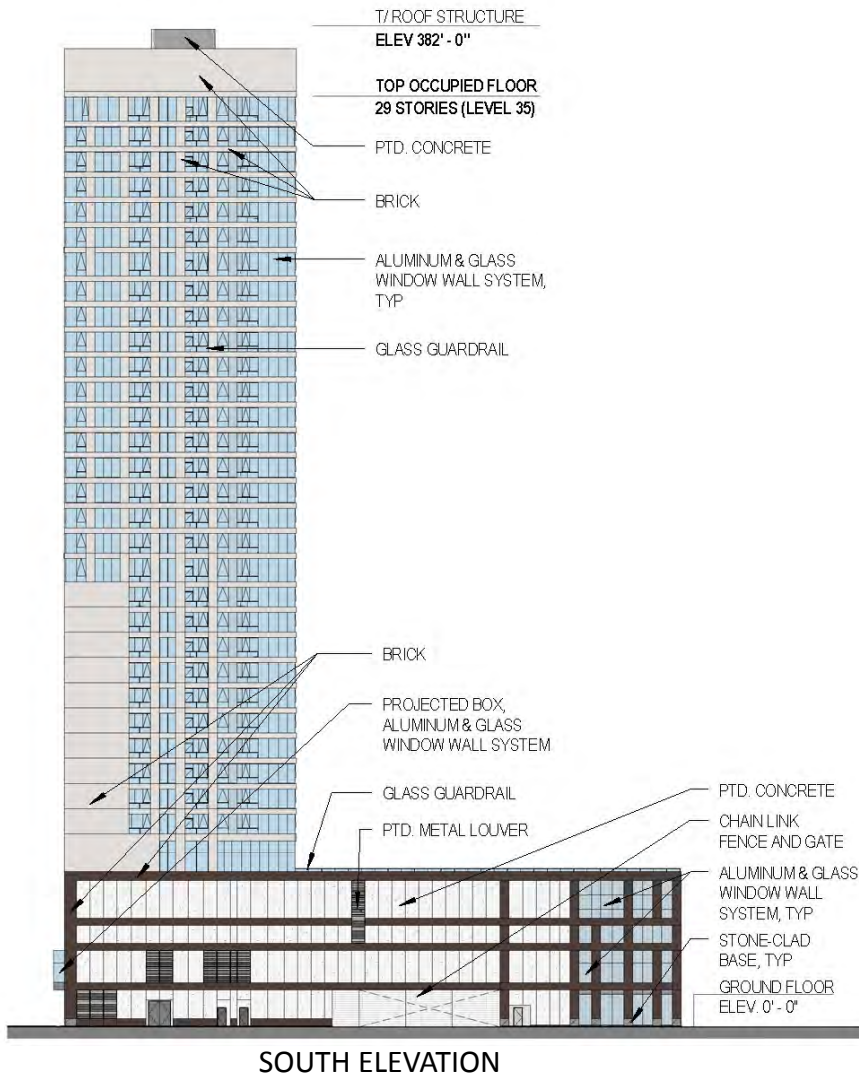




BULK REGULATIONS TABLE

| | |
|---|--|
| NET SITE AREA: | 31,457 sf |
| GROSS SITE AREA (NET SITE + REMAINING IN PUBLIC RIGHT OF WAY) | 54,080 sf |
| MAXIMUM ALLOWABLE FAR: | 7.0 |
| UPPER LEVEL SETBACK BONUS: | 1.0 |
| AFFORDABLE HOUSING BONUS: | 1.0 |
| TOTAL FAR WITH BONUS: | 9.0 |
| MAXIMUM ALLOWABLE FAR AREA: | 283,113 sf |
| MAXIMUM RESIDENTIAL UNITS: | 298 Units |
| AREA OF RETAIL / COMMERCIAL: | 16,500 sf |
| ACCESSORY PARKING: | 109 Spaces (5HC) All Standard 8.5' x 18' |
| LOADING BERTHS: | Residential (2) at 10' x 25' Commercial (1) at 10' x 25' |
| PROPOSED BUILDING HEIGHT: | 382'-0" Top of Roof Structure (Including elevator override) |
| MINIMUM NUMBER OF BICYCLE PARKING: | 153 |







720 N. LaSalle Planned Development

Superior Park, LLC | 720 N. LaSalle St.

Wells & Superior – Looking Southeast

Chicago, Illinois 60610 | August 21, 2014



© 2014 bKL Architecture LLC



b KL

720 N. LaSalle Planned Development

Superior Park, LLC | 720 N. LaSalle St.

LaSalle & Superior – Looking Southwest

Chicago, Illinois 60610 | August 21, 2014



© 2014 bKL Architecture LLC



720 N. LaSalle Planned Development

Superior Park, LLC | 720 N. LaSalle St.

LaSalle & Superior – Looking Southwest

Chicago, Illinois 60610 | August 21, 2014



© 2014 bKL Architecture LLC







720 N. LaSalle Planned Development

Superior Park, LLC | 720 N. LaSalle St.

Wells & Superior – Park Close Up View

Chicago, Illinois 60610 | August 21, 2014



© 2014 bKL Architecture LLC



720 N. LaSalle Planned Development

Superior Park, LLC | 720 N. LaSalle St.

Aerial View – Looking Southeast

Chicago, Illinois 60610 | August 21, 2014



© 2014 bKL Architecture LLC